

the Port Festival

8-16 Oct⁰⁹

culture
arts
music
fun

www.portfestival.com.au



Opening
Night 4

Major
Weekend Events 5

Theatre
& Music 10

Black &
White Club 14

Artists
in Residence 18

Visual Arts
& Installation 20

Especially
for Kids 34

Eclectic
Port Events 40

On the River
& Festival Food 46

Festival
Calendar 49

Guide
& Map 50

Sponsors
& Thank you 54



Lighthouse Hub



Port West Hub



Family Friendly

Mayor's Message

Welcome to the second Port Festival as the City of Port Adelaide Enfield again sets the pace as one of the most progressive, go-ahead regions in South Australia.

The first Port Festival brought many visitors to Port Adelaide, and was a stimulus for a huge range of artistic endeavour and good old fashioned entertainment. It also was great for business, with many local enterprises reporting record trading levels.

This is a city that is forging ahead despite the economic downturn. We've always had a strong sense of our own culture and identity, and that's what the Festival helps to celebrate.

This is a truly exciting program and I congratulate the Festival and Council staff who've brought it all together. Equally, we could never have done so without the strong support of the artistic and business communities, and the people of Port Adelaide Enfield.

Thank you one and all – and now,
on with the show!

Gary Johanson



Port Partnership Message

The Port - It's happening

Everywhere you look, 'The Port', as it is affectionately known, is changing shape.

Investment is breathing new life into many of Port Adelaide's heritage buildings, attracting a diversity of new business and other activity. New residents are moving in, drawn to the area's unique character. Throughout the year events, festivals and activities along the waterfront and around the town add to its colour and appeal.

The Port Partnership and its member stakeholders, City of Port Adelaide Enfield, Land Management Corporation and the Newport Quays Consortium are proud to sponsor the 2009 Port Festival.

This festival is sure to capture the unique and eclectic spirit of the Port and complement a season of events and activities.

It's an exciting time in The Port as the region re-emerges as a dynamic hub to work and play and a highly desirable place to live.

Port Partnership

Supported by

City of Port Adelaide Enfield
Land Management Corporation
Newport Quays Consortium

Ninna marni

and welcome to the Port Festival! Port Adelaide is proud and ready to show off all our talented artists and community! I especially hope you come down to see Purrutendi at Lartelare. Lartelare is a monument to a very special lady, her family and the whole Aboriginal community. It is meant for everyone to be a part of. Port Adelaide is the best place in town and the festival is a great way to see what we are all about. We want to show you our place and tell you our stories. Come to Port Adelaide, enjoy yourself, and know that you are on Kaurna land. Please respect the land that you are on.

Auntie Josie Agius



Creative Producer's Message

Port Adelaide – a hub for artists, a proud and independent spirit, a central place in South Australia's story. It's a place with a contrasting landscape of heritage, industry and river ecology. We are a community enriched by our Aboriginal and maritime histories. What better place for an arts and cultural festival than the Port!

The 2009 Port Festival celebrates Port Adelaide through an 8 day program of music, theatre, circus, visual art, installation and events along the Port River. The program has been produced with and by local artists, communities and Port businesses, and we also welcome to the Port several artists from other communities who we've invited to contribute to the festival. With around 100 events to choose from, the festival offers many different expressions of the Port's local cultures.

Themes that have inspired the program include the Port's traditional colours of black and white, river culture, birds, light, seasonal journeying and Port people. 'Place' has been especially important and the festival sits within iconic Port sites, including Black Diamond Square, Waterside Workers Hall, Harts Mill and the recently launched public landmark park called Lartelare, that honours Kaurna people's custodianship and culture. The festival celebrates these sites and more in creative and people-friendly ways. And throughout the Port you will find galleries, museums, pubs, cafes and even windows hosting festival events.

I'd like to thank and congratulate the incredibly hard working Port Festival team, the artists and presenters, the Port Festival Reference Board, our generous sponsors and supporters, and the local businesses and community who have embraced the festival. As a local, I am very proud of what we have all achieved!

Welcome to the Port Festival - we invite you to share in our stories, see today's Port Adelaide and imagine its past and future, and most of all enjoy the Port's hospitality!

Emma Webb



the Port Festival

culture
arts
music
fun

Port Festival Opening Night Performance

Purrutendi

**Kurruru Youth Performing Arts, Paitya Dance Group
and the Port Festival**

Created by leading and local Aboriginal artists, elders, and young people, Purrutendi is a once-only event for all ages and a very special opening to the 2009 Port Festival.

Commencing at dusk at Lartelare, on the banks of the Port River, Purrutendi will pay respect to the Kaurna custodians of Yerta Bulti (Port Adelaide), welcome audiences to Kaurna country, and celebrate the living Kaurna culture of the Port.

Purrutendi means 'to recover, to revive, to live' in Kaurna language. Weaving together dance, song, image and ceremony, the performance is inspired by the strength and renewal of people and land.

Purrutendi will take place at Lartelare, a landmark park honouring the birthplace and rich cultural heritage of Kaurna Elder Lartelare, her descendants and the wider Aboriginal community. Launched in June 2009, Lartelare is testimony to the vision of the late Auntie Veronica Brodie, Lartelare's Great Granddaughter. Combining art, history, nature and play, the site connects us all to the land and communities in which we live. We are honoured to commence the Port Festival here.

Date Thu 8 Oct

Time 7-8.30pm

Duration 1hr 30min

Ticket Price Free

Venue Lartelare – Wirra Dr New Port

Enter Newport Quays off the Causeway Rd, next to Ethelton train station or from stairs on south/western side of the Jervois Bridge. Outdoor location – please dress warmly!

Map Ref N1



Government
of South Australia

Arts SA

Luminosity Light up the Port!

Major
Weekend Events

The Port Festival

The Port Festival presents Luminosity - a must-see night of light, music and circus, featuring laser light show **Fish Opera**, never before seen in South Australia.

As heartwarming and humorous as it is breathtaking, **Fish Opera** will treat you to a laser light cabaret of sea creatures performing operatic anthems on the Port River. Created by Laservision, this international award-winning tour de force uses high powered lasers, architectural lighting, surround sound and digital image projection. Magical for adults and children alike!

Adding to a great night out, Luminosity presents two of Adelaide's hottest music acts – **Sukatash** and **Adam Page Solo**.

Seven-piece collective Sukatash blend old school funk, heavy beats and raw soul with relentless rhymes, creating a powerful live show not to be missed. With slick grooves and a line-up to match, Sukatash will make you want to get up to get down, and you'll be glad you did!

Adam Page Solo is a one-man musical extravaganza, whose unique style involves live recording and looping of 15 instruments to create an amazing sound. Adam is a virtuoso saxophonist and master of bass, keys, percussion, guitar, flute, clarinet, vocals, throat singing, beat boxing, mbira (African thumb piano), didgeridoo and nose flute, with the odd vegetable thrown in!

Through the night, the Lighthouse Hub streetscape will be cast in a new light, illuminated with lanterns, fire, and projections. Delight in the gorgeous light sculpture **Promise** and the Port's famous lighthouse lit up. **The Tiny Top** and other performers will entertain you with sideshow and circus frivolities. Great food and drinks available.

Date Sat 10 Oct

Time 5-9pm

Adam Page Solo from 5.30pm.

Sukatash, with guest appearance by Adam Page, from 6.30pm.

Fish Opera at 8pm, 8.30pm and 9pm
fireworks after 9pm show.

Duration 4hr

Ticket Price Free

Venue Lighthouse Hub,
Commercial Rd Port Adelaide
Gather along the Queen's Wharf
for the Fish Opera.

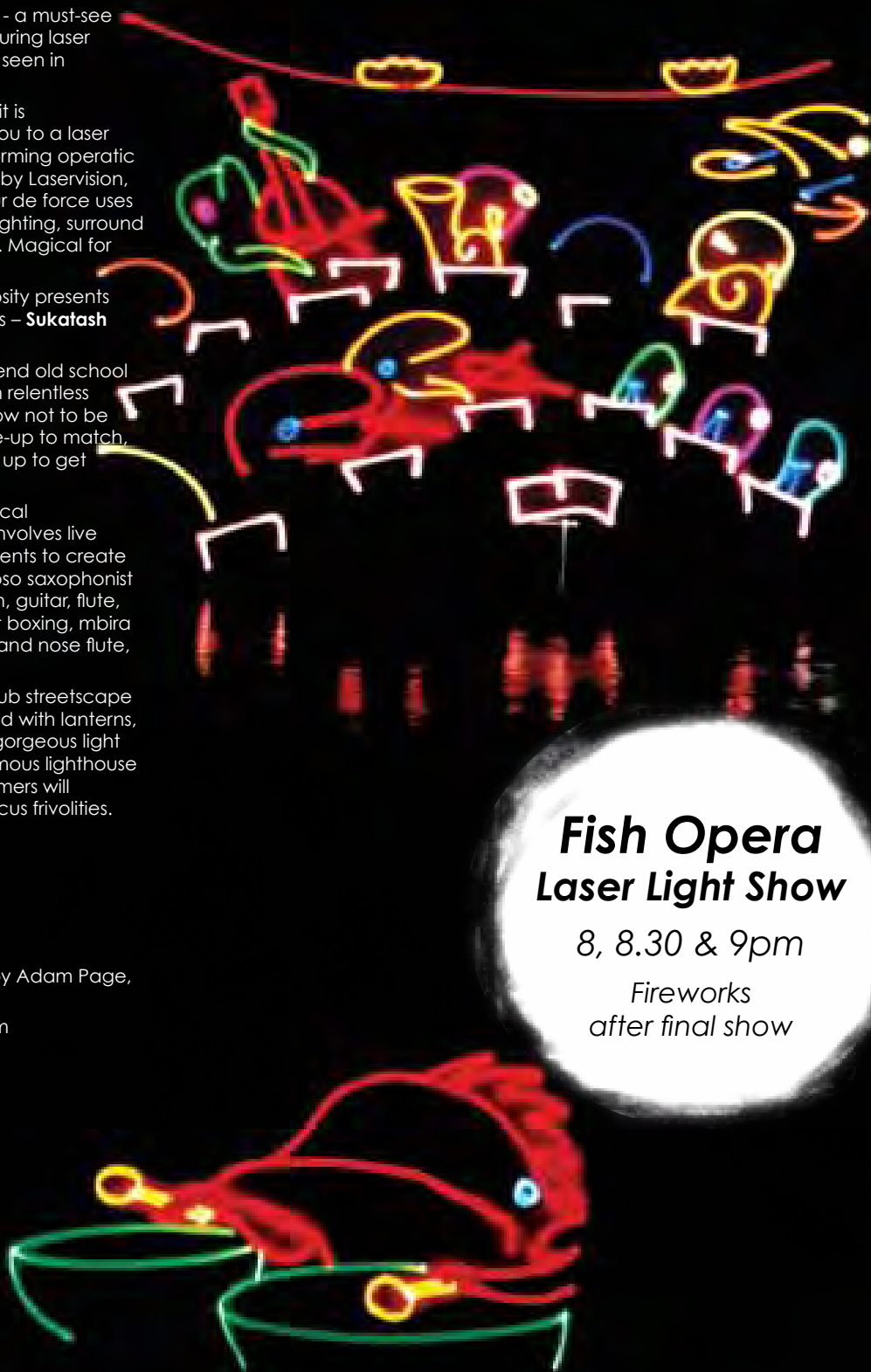
Outdoor location
- please dress warmly!

Map Ref I13

Fish Opera Laser Light Show

8, 8.30 & 9pm

Fireworks
after final show



Flinders Ports Sunday on the River

The Port Festival

Enjoy all the magic of a day by the river with food, music, arts and entertainment. Whether you take to the river or be a landlubber, there's plenty for everyone to do - young and old!

Be treated to live cooking demonstrations with Michael Keelan and Michael Angelakis as they film a special Port Festival episode for Channel 9's 'Out of the Blue'. The '**Two Michaels**' will be joined by award-winning local chefs Judyta Musolino (Phore Seasons) and Namit Mangal (Spice n Ice) and some surprise guests.

Take in life on the river with fun and festivities throughout the day, including on-water boat displays, open ship on the historic One and All, Port River cruises and maritime-themed demonstrations (see pg 46).

Enjoy popular Adelaide band **Mr Buzzy** alongside a host of roving entertainers, including the raucous **Three Men in a Tub**. See the human wonderland of **The Tiny Top**, with fantastic free sideshow and circus entertainment all day.

Board the historic Police launch **Archie Badenoch** at Queens Wharf for a short boat trip to Marina Cove, Newport Quays. Try free **giant board games** on the Marina Cove wharf, or take a walk around the beautiful Lartelare park.

Be swept up in the beautiful sails of the **Promise** sculpture, and choose from over 20 visual arts exhibitions in the vicinity.

Great food, wine and beer available in the Port throughout the day.

Date Sun 11 Oct

Time 11am-4pm

Duration 5hr

Ticket Price Free

Venue Lighthouse Hub
Commercial Rd Port Adelaide

Map Ref 113



 **Flinders Ports**
SOUTH AUSTRALIA



Major Weekend Events



Roving performers

The Port Festival

You never know who you might bump into at the Lighthouse Hub...

Three Men in a Tub are visually stunning street theatre on the move, inspired by the children's nursery rhyme 'Rub a Dub Dub Three Men in a Tub'. Beware the Butcher, the Baker and the Candlestick Maker as they promenade through public spaces - you just might end up in the wash!

Debuting at the Port Festival are giant comical pelicans **Trash and Treasure**. This punk and pearls pelican duo will delight and amaze audiences with their hilarious recycling antics.

Check out fantastic stilt performers including **The Cone People** by kneeHigh Puppeteers and **Chefs on Stilts** by POG Circus. **Hedgemonkey** and **Hot for Joe** will entertain with their contemporary brand of morris dancing, which has won them wide acclaim at home and in the UK. **Prawnhead** will have you tapping your toes to their unplugged "bluebilly" sound that combines blues, country, bluegrass and rockabilly!

These performers and more will perform at various times daily between 11am to 4pm, so keep a look out!

Dates Fri 9-Sun 11 Oct

Price Free

Venue Lighthouse Hub
Commercial Rd Port Adelaide

Map Ref I13



Welcome home Bryan Dawe...

The Port Festival

Bryan Dawe, who grew up in Port Adelaide, is one of Australia's finest political satirists. He has enjoyed a long, successful career writing and performing on national radio, TV and film. Best-known for his work with John Clarke on the ABC's 7.30 Report, Bryan was also a cast member and writer of the critically acclaimed spoof of the Sydney Olympics, the ABC TV series 'The Games'. His film credits include the Australia hit comedy 'The Castle', 'The Honorable Wally Norman', and Paul Cox's 'Lust and Revenge'. He also writes and performs two much-loved satirical characters on ABC Radio: 'Sir Murray Rivers QC' and 'Roly Parks' with his 'Letter from Kalangadoo'.

See Bryan Dawe at the following Port Festival events:

- Opening the visual arts exhibition **Rust**, 5pm Fri 9 Oct at the Black Diamond Gallery 66 Commercial Rd – refer pg 27
- In the Port Festival's Forum series, hosting **Harts Mill Inhabited Again** on Sat 10 Oct and speaking at **Don't know whether to laugh or cry...** on Sun 11 Oct – refer pg 44
- Presenting some of his best-loved characters at **The Black & White Club**, 9.30pm on Sun 11 Oct – refer pg 14



Umbrella Fest

Tony Doyle Visions and the Port Festival

Masses of brightly coloured and decorated umbrellas will form the backdrop for a unique two day 'festival within a festival', presenting an exciting and moving program of music, dance and theatre.

Umbrella Fest at the Port is the crowning event of The Somersault Project, a six year long disability arts program that has modelled disability access, inclusion and creativity throughout South Australia. The stunning umbrellas have been created by disability communities across the State, and together with the giant outdoor Somersault Seetainer installation, embody and express the values of inclusion and diverse cultural expression.

Over the two days see great bands including **Rhumboogie**, **Afrikeekeo**, **Zkye**, **The Flyers**, **JMG Band**, **Tweed Heads** and the **Danny Hodgson Quartet**; community choirs including the **Hope and Harmony Choir** and the **Big Country Choir**; performances by the **Tutti Ensemble**, **No Strings Attached** and **kneeHigh Puppeteers**; and much more!

Umbrella Fest showcases diverse disability arts and culture alongside a range of other great performers.

Dates Fri 9-Sat 10 Oct

Time 11am-4pm each day

Duration 5hr each day

Ticket Price Free

Venue Lighthouse Hub
Commercial Rd Port Adelaide

Map Ref I13



Australian Government



Australia Council for the Arts



Government of South Australia
Arts SA

This project has been assisted by the Australian Government through the Australia Council for the Arts, its arts funding and advisory body, the South Australian Department of Families and Communities and the Arts SA Richard Llewellyn Arts and Disability Trust.



Lighthouse Hub - arts, river culture & family fun...

Port Adelaide's famous Lighthouse located at Queen's Wharf, Black Diamond Square and the river end of Commercial Road will be a vibrant hub of daytime activity from Fri 9 Oct to Sun 11 Oct. The streets surrounding the Lighthouse Hub also include over 20 visual art exhibitions for you to enjoy.

The following symbol



indicates activity which occurs as part of the three day Lighthouse Hub.

2-Dimensional Life of Her

Insite Arts and the Port Festival

A visual theatre performance by Fleur Elise Noble.

A remarkable work of theatre made from drawing, animation, puppetry, projection and paper.

2-Dimensional Life of Her tells the story of an artist whose reality is infringed upon by an imaginary world that manages to escape from the confines of its two-dimensional existence.

A richly imagined parallel world is awoken where drawings reproduce themselves, drift between surfaces and move in and out of three dimensions.

Film, animation and puppetry occupy the stage as the audience enter a space charged with possibility, becoming part of a real-time artwork which breathes with life.

Illusory, captivating and cheeky, 2-Dimensional Life of Her won Best in Show as part of the Under the Radar program at the Brisbane Festival 2008.

"This astoundingly full bodied performance would be the talking point of any festival... Noble not only deconstructs her art, she shreds, incinerates and rebuilds it, milking the full potential of today's multi-media technology like an Andy Warhol for a new era." Patrick McDonald, The Advertiser.

Suitable for audiences aged 8 years and up.

Dates Fri 9 - Sun 11 Oct

Time 5pm, 7pm & 8pm Fri 9 Oct; Sun 11 Oct;
2pm, 4pm & 7pm Sat 10 Oct

Duration 40mins

Price All tickets \$10. Bookings recommended.
To book call 0406 124 621

Max capacity 40 per show

Venue St Paul's Anglican Church Hall
1 Church Pl Port Adelaide (opposite the Birkenhead Bridge)

Map Ref M10



Saskia Falls

Vitalstatistix Theatre Company

Created by RealTime collaborators Emma Beech, Sarah John and Holly Owen.

An innovative new work, developed with mobile phones and blogging.

Is home where you live or something you carry? Is home the place you are yourself?

Germany. Spain. Adelaide. Saskia Falcon is falling. Don't catch her. Let her shatter. Meet face to face. Read between the lines. She's falling fast. Home Sweet Home? Maybe it's the wrong address...

Returning home after many years, Saskia is trying to find the person, the place and the space where she can be, belong, breathe. You'll become a part of her search for home, as you get to peer into her secret world...

The Real Time Collaborators have worked with Spain's internationally acclaimed Teatro de los Sentidos and with Carte Blanche, one of Denmark's premier theatre-making companies. Vitalstatistix are pleased to present YOU with the world premiere performance of Saskia Falls. Don't stay at home for this one.

Suitable for audiences aged 14 years and up.

Supported by the Port Festival.

Dates Wed 7-Sun 11 Oct; Wed 14-Sun 18 Oct

Time 6.30 & 8pm Wed 7- Sat 10 Oct,
6.30 & 8pm Wed 14 Oct & Sat 17 Oct;
5pm & 6.30pm Sun 11 & 18 Oct;
12.30, 2pm & 6.30pm Thurs 15 Oct - Fri 16 Oct

Duration 45min

Ticket Price & Details \$18A \$15Con, \$12 Fringe Benefits,
\$12 Students in school groups

To book call 8447 6211 or
www.vitalstatistix.com.au/season_saskia

Max capacity 25 per show

Venue: Waterside Workers Hall
11 Nile St (west) Port Adelaide

Map Ref K8



VITALSTATISTIX
THEATRE COMPANY



The Tiny Top

The Tiny Top and the Port Festival

Small in proportion and big in attraction, The Tiny Top presents a human wonderland of fairground performers at their very best! See a stunning array of contemporary sideshow artists all recently returned from their globe-trotting antics!

Step right up and the ever-popular **Princess Popcorn** will welcome you with a fancy flourish to the short, sharp sideshow acts of The Tiny Top.

See **The Great Gondos**, the most gifted gits about town. Physical comedy of romantic blunders where agonizingly beautiful moments collide with sheer chaos. You'll fall in love with them too!

Be charmed and alarmed by the naturally talented anatomical origami beauty, **Ruby Rubberlegs**, breathtakingly dexterous in mind and body.

Marvel at the absurd with the Vanguard of Vaudeville, **The Birdmann** brings plastic-bag juggling, object balancing, escapology and nostril tea-drinking moments you never thought possible.

Be amused and confused by celery-sword-swallowing **Oldaker**, discover the red-hot dancing dame **Pandora Pink** in a giant skirt the size of a dwarf ballroom, and marvel at the mental medley of mind-reading and magic from the **Tony Macaroni** Mayhem.

You'll gasp in amazement and laugh with horror. Real people doing real things. Really! Big entertainment for three days only in The Tiny Top.

Dates Fri 9 - Sun 11 Oct

Times 11am-4pm plus 5-8pm Sat 10 Oct
(See The Tiny Top chalkboard for exact times of different acts)

Duration 15min acts every half hour

Price Free

Venue The Tiny Top Tent (adjacent Lighthouse)
Lighthouse Hub Commercial Rd Port Adelaide

Map Ref H12



Wakaid Girl - Lyndhurst Kid

**Kaine Maikuk Arts Management and Loose
Canon Art Services**

*"My umma [mother] - she's strong, black and proud.
She's a dancer, singer, from her I'm glad to be... My
fadda [father] - gentle, thinker, bush philosopher, talc
sculptor - white, Dutch part of me."*

Writer/performer Diat Alferink's autobiographical work Wakaid Girl - Lyndhurst Kid tells a tale of nationhood, identity, and reconciliation. It is a personal story about generosity of spirit, forgiveness and love, told in intimate, cabaret style. This heart-warming monologue, accompanied by original songs composed by Lou Bennett, takes audiences on an unforgettable journey through childhood memories, contrasting landscapes, and love of country and family.

"If anyone in Australia has a decent yarn to tell about their life, it is Diat Alferink". Matt Byrne, The Sunday Mail

Written and performed by Diat Alferink, directed by Maude Davey, with music composed by Lou Bennett and performed by Felix Kerry. Production Manager - Nathan Parker, Sound Production - Freddy May and Project Manager - Janine Peacock.

Wakaid Girl - Lyndhurst Kid was first produced and presented by Vitalstatistix Theatre Company.

Suitable for audiences 12 years and up.

Supported by the Port Festival

Dates Mon 12-Tues 13 Oct

Time 8pm Mon 12 Oct; 1pm & 8pm Tues 13 Oct

Duration 60min

Ticket Price \$15A \$10Con

\$6 students in schools groups on Tues 13 Oct

To book call 8449 1003

Venue Waterside Workers Hall
11 Nile St (west) Port Adelaide

Map Ref K8



Glow- Taltaityai

The Port Festival

Get a special insight into a unique public artwork.

Glow (also called Taltaityai - a Karna word meaning 'glowing') is a contemporary conceptual public artwork created by South Australian artists Michelle Nikou and Jason Milanovic. It features life-sized glow in the dark emus along the Port waterfront.

Launched in June 2009, Glow was commissioned as a major work by the City of Port Adelaide Enfield, supported by Arts SA, as the inaugural project in the 'Nodes of Memory' public art program, part of the Port Waterfront Development.

For one night only at the Port Festival, the renowned Kurruru Dance Ensemble will present a special performance in situ with Glow. You will also hear about the work from the artists and local Elder Uncle Kevin O'Loughlin.

And, after the event, it's just a two minute walk to two other great events - Harts Mill Inhabited (see page 19) or Rockin' the Boat (details next page).

Date Thu 15 Oct

Time 7.15pm

Duration 30min

Price Free

Venue At the Glow public artwork situated on the small reserve abutting the Port River promenade at the western end of Walter Morris Drive (off The Minories) Port Adelaide
Outdoor location - please dress warmly!

Map Ref Q5



Rockin' the Boat

The Port Festival and Born on Monday Choir

Rockin' the Boat presents an eclectic night of songs and stories celebrating the independent spirit of ports around the world.

From Brecht to Guys and Dolls, Nick Cave to Kate Bush, Joni Mitchell to John Lennon, come on a musical voyage with the docksiders, seafarers, working girls, dreamers and rebels of the Port.

Featuring the Born on Monday Choir, Eileen Darley, Heather Frahn, Rosalind Aylmore, Peter Douglas, Joe James, Stephen Sheehan, Lou Bennett and some of Adelaide's top musicians, directed by Catherine Fitzgerald.

This one-night-only show is not to be missed!

Date Thurs 15 Oct

Time 8pm

Duration 2hr

Ticket Price \$10 entry at the door

Venue Waterside Workers Hall
11 Nile St (west) Port Adelaide

Map Ref K8



VITALSTATISTIX
THEATRE COMPANY

Theatre
& Music

Port West Hub

The Waterside Workers Hall, St Paul's Anglican Church Hall, the iconic Harts Mill and outdoor sites overlooking the Port River will be home to gritty performances and unique events that celebrate Port Adelaide and the Festival's Black & White Club.

The following symbol



indicates the activity which occurs at the Port West Hub.

performance & events from Waterside to Harts Mill

The Black & White Club

The Port Festival

Gather at **The Black & White Club** in the historic Waterside Workers Hall for fantastic nightly festival acts!

Thurs 8 Oct - Cal Williams Jr Trio with Emily Davis

One of Australia's finest slide blues guitarists - three times winner of 'South Australian Songwriter of the Year' and Bank's Music 'Best New Music U.K.' award winner - performing with his band and special guest Emily Davis.

Sat 10 Oct - Lou Bennett and Alics Gate-Eastley (duo) and Heather Frahn (solo)

Lou Bennett and Alics Gate-Eastley, of Melbourne's Sweet Cheeks, combine gorgeous harmonies and bass with lyrics that speak of compassion, truth, love and heart ache.

Heather Frahn, Adelaide's own mighty voiced songstress blends funky folk with worldly roots.

Sun 11 Oct - Bryan Dawe

Best-known for his work with John Clarke on the ABC's 7.30 Report, Bryan Dawe, who grew up in Port Adelaide, is one of Australia's finest political satirists. Bryan will introduce us to some of his best known characters.

Wed 14 Oct - Making Jam at Waterside

Bring your instruments and voices - it's an open mike and jam session at the Black & White Club!

Thurs 15 Oct - Rockin' the Boat

A night of songs taking you on a journey with the docksiders, seafarers, working girls, dreamers and rebels of the Port - see page 13 for details.

Fri 16 Oct - Black & White Forever

Kick your heels up with masters of raw old-school funk and soul, The Transatlantics, supported by Black Stump - see pg 15

Dates Thu 8 Oct; Sat 10-Sun 11 Oct; Wed 14-Fri 16 Oct

Time Doors open at 9pm acts start at 9.30pm. Except Thurs 15 Oct & Fri 16 Oct when ticketed shows start at 8pm

Duration Closing midnight on Thu 8, Sun 11, Wed 14, Thu 15 Oct Closing 1am on Sat 10 & Fri 16 Oct

Ticket Price \$5 entry at the door, \$10 entry for Rockin' the Boat Thurs 15 Oct and Black & White Forever Fri 16 Oct

Venue Waterside Workers Hall 11 Nile St (west) Port Adelaide

Map Ref K8



Black & White Forever - final night party

The Port Festival

The Transatlantics are the tightest and most hip-droppin' live act to emerge onto Australia's dance scene, with major festivals and international support slots under their belts. Masters of raw old-school funk, this Adelaide-own nine-piece explosion take their cues from the legendary music of the late 60's and early 70's to bring pure dynamite soul to the dance floors of the new millennium.

Supported by **Black Stump**, a unique black and white ensemble whose original music combines blackfella country, whitefella blues and everything that rocks in between!

Style up in black, white and red!

Date Fri 16 Oct

Time 8pm-1am

Duration 5hr

Ticket Price \$10 entry at door

Venue Waterside Workers Hall 11 Nile St (west) Port Adelaide

Map Ref K8

Dance up
a storm at **The
Black & White
Club** for the
final night of
the festival!



Live Music

Ships & Sailors & Songs of the Sea

Steve Foster

A sound and light multi-media journey through our maritime history, told by a master storyteller in songs both traditional and original. Adelaide's own international award winning singer/songwriter, Steve Foster has written hits for John Farnham & Little River Band, has performed Australia wide with stars of the world's music industry. Steve's new CD will be launched on the night. At the end of the show the audience will be led by the musicians, to the free laser light show by the lighthouse.

Dates Sat 10 Oct

Time 6pm

Duration 1hr 30min

Ticket Price \$20pp includes concert, finger food, drinks & \$5 CD voucher

Tickets available from Port Mall Newsagent
St Vincent St Port Adelaide
Call 8447 2961 & online at www.stevefoster.info

Venue SA Maritime Museum
126 Lipson St Port Adelaide

Map Ref I16

The Last Farewell

Nobody's Fault but Mine

Join beloved a cappella group Nobody's Fault but Mine for a series of intimate performances in a unique setting. Three 30 minute performances will draw on themes of love, loss, parting and reunion, through traditional ballads and sea shanties.

Dates Sun 11 Oct

Time 11.30am; 12.30pm & 1.30pm

Duration 30min

Ticket Price \$5, children under 12 free.
Limited numbers - bookings essential.
To book call Lara on 0407 184 575 or 8405 6560

Venue The Sail Makers Loft (first floor) corner of Lipson & Jane St (enter via Jane St) Port Adelaide.

Please note: steep stairs.

Map Ref I15

Hope & Harmony Choir

Tony Doyle Visions and the Port Festival

Enjoy the music, passion and spirit of this great community choir, whose 40-plus members come from all walks of life, including supported residential facilities.

Dates Sat 10 Oct

Time 11.20am

Duration 40min

Ticket Price Free

Venue The Umbrella Fest stage Lighthouse Hub
Commercial Rd Port Adelaide

Map Ref I13



Sounds of the Sea

Enfield Brass Band

Be swept away by the award-winning Enfield Brass Band on a nautically themed musical adventure over the seven seas.

Dates Fri 16 Oct

Time 8pm

Duration 2hr

Ticket Price \$12A \$10Con
Tickets at door or bookings call 0438 394 017

Venue Port Adelaide Uniting Church
169 Commercial Rd Port Adelaide

Map Ref O17



Die Lustige Kapella - The Fun Band

SA Aviation Museum

The all-brass Fun Band puts the 'Oompah' back into music, with old style sing-a-longs and plenty of audience participation.

Dates Fri 9 Oct

Time 6pm & 7pm

Duration 30min

Ticket Price \$8A \$6Con \$4C \$20F
(2 Adults & 3 Children)

Venue SA Aviation Museum
Lipson St (south) Port Adelaide

Map Ref O19

Rock the Dock

Port Dock Brewery Hotel

Adelaide favourites **Rock the Casbah** take to the stage for an all-out rock fest at the historic Port Dock Brewery Hotel. The five piece band will keep the house rocking and jumping with many great hits from The Beatles, Robert Palmer, Robbie Williams and a stack of other era based classics. Also appearing on the night will be the **Phoenix Fire Dancers**. The fire dancing duo will perform a choreographed show with an array of fire apparatus in an exhilarating event for all ages.

Dates Fri 9-Sat 10 Oct

Time Dinner 7pm; Show 8.30pm

Duration 3hr

Ticket Price \$40 dinner and show package

Venue Port Dock Brewery Hotel
Todd St Port Adelaide

Map Ref H17

Helix the Band

Dockside Tavern

Young, energetic, four piece local band, Helix aims to get everyone up on the dance floor with their covers of hits from way back to right now.

Dates Sun 11 Oct

Time 2pm

Duration 3hr

Ticket Price Free

Venue Dockside Tavern 130 Lipson St Port Adelaide

Map Ref G15

Eric Marshall Quintet

Jazz at the Newmarket

Dust off those dancing shoes or just kick back to some great jazz over lunch and a drink. Meals start from just \$10.

Dates Sun 11 Oct

Time 1pm

Duration 3hr

Ticket Price Free

Meal bookings essential call 8447 2400

Venue Newmarket Hotel
132 Commercial Rd Port Adelaide

Map Ref N16

Car-Cophony

The Port Festival and Country Arts SA's Local Stages Initiative

Ladies and Gentlemen, start your engines!

Car-Cophony is a unique music event, featuring an orchestra of twelve cars, their stereos and drivers. Designed to wobble the subwoofers and pitch the tweeters, an original score will be blasted from 12 cars, including live engine revs and horns, creating a stereo symphony effect that everyone will love – rev heads and all!

A highlight at Port Augusta's 2009 Desert Fringe, Car-Cophony is a strangely hypnotic and powerful soundscape which will vroom across Port Adelaide's Dock One, moving from car to car in a symphonic representation of our obsession with our automobiles.

Created and composed by Mathew Timmis.

Supported by DP World, P&O and Macweld Industries.

Date Sat 10-Sun 11 Oct

Time 3.30pm

Duration 30min

Ticket Price Free

Venue Dock One Port Waterfront
adjacent Todd St Port Adelaide

Map Ref F17



Pt Augusta Docks in Port Adelaide

A collaboration between the Port Festival and Country Arts SA's Local Stages Initiative. This partnership has supported Cindi Drennan's residency with the Port Festival and the presentation of Mathew Timmis' work Car-Cophony. The communities of Port Adelaide and Port Augusta have shared experiences as Port cities, and we are very pleased to host Cindi and Mathew.

The Port Festival aims to continue to develop relationships with other Port based artists and festivals in the future.

Port Festival Residencies

Two acclaimed artists have worked on multiple projects, collaborated with each other, and facilitated community participation as artists-in-residence with the Port Festival in 2009.

Cindi Drennan

Cindi specialises in audiovisual and projection art, designing installations, light sculptures, son et lumier (sound and light shows) and structures for festivals, theatre, public spaces and events. Seeking to use light and images to create illusions and transform the environment, her work has been featured at the Sydney Opera House, Sydney Festival and Adelaide Fringe Festival. Cindi is now working with regional and urban communities in SA and NSW, and is developing low energy and green power solutions for projection art, through her company Illuminar.

For the Port Festival Cindi has created Harts Mill Inhabited and will present Promise, as well as working on Purutendi - the Port Festival opening night performance and presenting community workshops.

Lou Bennett

Yorta Yorta Dja Dja Wurrung (Australian Indigenous) performer and composer. Lou has played to audiences worldwide and alongside artists including Keb Mo, Finbar Fury, Sweet Honey in the Rock, Archie Roach, Ruby Hunter, Midnight Oil, Christine Anu and Bangarra Dance Company. Lou regularly works in theatre, as a composer, performer and musical director, with credits including Magpie (Melbourne Workers Theatre), Conversations with the Dead (Ilbjerri Theatre, Playbox, La Mama), Yanagail! Yanagail! (Melbourne Workers Theatre, Playbox), The Sapphires, (Melbourne Theatre Company), Show Us Your Tiddas (Melbourne Workers Theatre) and Saltbush (Come Out Festival, Compagnia TPO). A former member of acclaimed trio Tiddas, she tours nationally and internationally with the Black Arm Band and also with her own band Lou Bennett and The Sweet Cheeks.

For the Port Festival, Lou has composed for Purutendi - the Port Festival opening night performance, Harts Mill Inhabited and Rockin' the Boat, facilitated workshops with choirs and will perform at the Port Festival's Black + White Club.

Inhabited

The Port Festival, Illuminart and Country Arts SA's Local Stages Initiative

Port Adelaide's iconic Harts Mill precinct - collectively loved and representing so much about the Port's past and its future.

The two heritage listed buildings - Harts Mill and Adelaide Milling Company with its characteristic red brick - were built by Captain John Hart (whaler, sealer, miller, entrepreneur and three times State Premier). Once a bustling industrial hub, the mills have seen generations of Port workers. They now stand empty, awaiting use within the redevelopment of the Port Waterfront.

For three nights this local landmark will come alive again as its walls are taken over by characters, creatures, words, dreams and light.

Extraordinary moving imagery created by projection artist Cindi Drennan will be projected across the imposing red brick wall facing the Port River, set to a stunning original soundscape by composer Lou Bennett.

Dates Wed 14-Fri 16 Oct

Time 8pm

Duration 20min cycles repeated over 2hr 30min

Ticket Price Free

Venue Harts Mill St Vincent St (adjacent Jervois Bridge) Port Adelaide. No access from Princes Wharf.

Outdoor location - please dress warmly!

Map Ref K4

Harts Mill
complex will
come alive with
stunning projected
images for
3 nights only!





Port Portraits

The Port Festival

Get to know the people of the Port.

This exhibition of over 40 Port Adelaide locals, from prominent leaders to unsung heroes, puts on show the character, diversity and tenacity of Port people.

Port Portraits encompasses three groups of work.

Photographer John Nieddu's award winning series Portraits of Port Adelaide are beautiful and proud individual portrayals.

Binnanendi, a photographic series by Shane Reid, produced by Kurruru Youth Performing Arts, presents local Aboriginal boys and young men showing off the things that matter most to them, from family, music, surfing, film-making and footy.

Complementing these two photographic exhibits is Faces of the Port - ten painted and mixed media portraits commissioned by the Port Festival. Faces of the Port has paired together ten sets of artists and local identities, producing striking, humorous and inspiring new portraits, with the relationships developed between artists and subjects documented as part of the project.

The artists are Marg Easson, John Ford, Karen Hammat, Sue Heinemann, Sebastian Humphreys, Tom Phillips, Gerhard Ritter, Koruna Schmidt-Mumm, Lucy Thurley and Roland Weight.

A special feature at the exhibition will be renowned South Australian artist Robert Hannaford's portrait of much loved Port wharfie and community leader, the late Arthur Shertock. Robert Hannaford is widely acknowledged as Australia's leading realist painter.

Port Portraits is a great introduction to Port Adelaide and some of the locals that do us proud!

Dates Thu 8-Fri 16 Oct

Time 10am-5pm

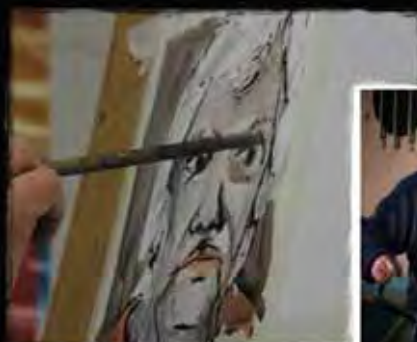
Ticket Price

Museum entry is \$12A \$9Con \$5C (5-18yrs) \$29F

Venue National Railway Museum

Lipson St (south) Port Adelaide

Map Ref M18





Dolphins in the Port

The Port Festival

A big hit at the 2007 Port Festival, Dolphins in the Port is an arts project celebrating and supporting the Port River's unique wildlife.

Artists have designed and painted ten life-sized dolphin sculptures, which will be on display at the Lighthouse Hub. The artists are Paul Alexander, John Ford, Karen Kulyuru, Damien Marks, Yilpi Marks, Danica Gacesa McLean, Bridgette Minuzzo, Mike Retter, John Whitney, Meghann Wilson and sculptor Steve Hayter.

These vibrant creations will be available for purchase with all proceeds benefiting the Whale and Dolphin Conservation Society (WDCS), the global voice for the protection of whales, dolphins and their environment.

The Dolphins in the Port pod will be displayed with baby dolphins created by students from LeFevre Peninsula Primary School. Information about WDCS and the Port River dolphins will be available at the Lighthouse Hub where you can also make a donation to WDCS.

WDCS is unique in combining concern for the welfare of whales and dolphins with efforts to ensure the protection of species, populations and their habitats. Their international team of researchers, scientists and conservationists conduct field conservation and research projects all over the world including Colombia, India, West Africa, New Zealand and the South Pacific, giving them a truly global reach. WDCS Australasia is based here in Port Adelaide.

A full catalogue with information about purchasing the dolphins will also be available at the Port Adelaide Visitor Information Centre or on the Port Festival website at www.portfestival.com.au

Dates Fri 9-Sun 11 Oct

Time 10am-4pm

Venue Lighthouse Hub
Commercial Rd Port Adelaide

Map Ref I13



Government of
South Australia

Imc



Potential Buyers

If you are interested in purchasing one of these unique dolphin sculptures, or would like to attend an exclusive preview event, please contact Fiona Blinco at WDCS on 8440 3700 or 0400 835 161 or fiona.blinco@wdcs.org



Promise

The Port Festival, Illuminart and Country Arts SA's Local Stages Initiative

"I will return for you", "I will never love another",
"We will be together".

As beautiful by day as by night, Promise is a stunning sculptural installation inspired by sailing journeys and the promises made by people who are separated by voyages. Made from recycled lace and vintage wedding gowns, the piecing of many fabrics represents the joining of people from all walks of life who hold together a promise, such as in marriage.

At night Promise is illuminated with projected imagery and a haunting soundscape which pass through the layered screens, spilling onto the neighbouring environment, creating reflections and shadows of the images and lace. Sails which move in the wind, distorting the projected images, are the twists of life... they hold true while bending with the wind.

Seen at the 2009 Sydney Festival, this is the first time Promise has been presented in Adelaide.

Created by Cindi Drennan

Dates Fri 9-Sun 11 Oct

Time Anytime;

Projection and sound from 7.30pm each night

Venue Lighthouse Hub

corner of Nile St & Commercial Rd Port Adelaide

Map Ref I13



Long Distance

The Port Festival and the Media Resource Centre

Pick up the phone and connect with the past!

Bridging the distance between old and new, yesterday and today, Long Distance is a unique on-location oral history of the Port. Given new life with new media technology, purpose-built old rotary-style phones will be placed in four Port landmark venues – Lighthouse, Railway Hotel, Port Mall and Visitor Information Centre. Just wander by, pick up the receiver and hear great yarns from the past in the places they originally unfolded. You can even leave a story yourself during the Port Festival...and watch out for the phones randomly ringing!

Long Distance premieres at the Port Festival and will be further developed with other communities around South Australia.

Created by Sasha Grbich & Heidi Angrove

Dates Thu 8-Fri 16 Oct

Time Dependent on location – see below

Visitor Information Centre 9am-5pm

Lighthouse 10am-2pm

Railway Hotel 10am-10pm

Port Mall 8am-5.30pm Mon-Wed & Fri;

8am-8pm Thurs; 8am-5pm Sat

Ticket Price Free

Venues Visitor Information Centre

66 Commercial Rd Port Adelaide **Map** Ref K14

Lighthouse Queen's Wharf Port Adelaide **Map** Ref H12

Railway Hotel 247 St Vincent St Port Adelaide **Map** Ref J16

Port Mall 176 St Vincent St Port Adelaide **Map** Ref L13



Government
of South Australia
Arts SA

Silken Waves

Port Adelaide Artists Forum and the Port Festival

Large in scale and intricate in detail, Silken Waves tells a world of stories. Be swept away by the colours and beauty of these 25 wind-filled gloves of hand painted silk, created by people from more than 20 nationalities who have journeyed across the world to make Australia their home.

Supported by Community Arts Grant -
City of Port Adelaide Enfield

Dates Fri 9-Sun 11 Oct

Time 10am-5pm Fri 9 Oct; 10am-9pm Sat 10 Oct;
10am-5pm Sun 11 Oct

Venue Lighthouse Hub Port Adelaide

Map Ref H13



Birds of a Feather

The Port Festival, Carclew Youth Arts and Le Fevre High School

Get a bird's eye view of Port Adelaide at night. Students from Le Fevre High School have worked with artists Danica Wells-Heitmann & Luku to create animated windows within each of the Port Festival hubs. See river birds flying, swooping and perching in the windows of the beautiful art deco building at 21 Commercial Road. It's a masquerade party at the Waterside Workers Hall, as fancy characters (are they birds or people?) don their finest feathers for a great night at the Black & White Club.

Dates Thu 8-Fri 16 Oct

Time 7.30pm-1am each night

Venue Port Partnership office
21 Commercial Rd Port Adelaide

Map Ref I13

Waterside Workers Hall 11 Nile St (west)
Port Adelaide

Map Ref K8



Visual Arts & Installation

The Weaving River

The Port Festival

Celebrating the International Year of Reconciliation and International Year of Natural Fibres

The Weaving River will present traditional and contemporary weaving and carving practices, by Aboriginal, Islander, and non-Aboriginal artists, in a creative environment of workshops, displays and craft sales. Participating artists will create a joint project for display over the following week.

Come and join us, have a cup of tea and a yarn, and watch the artists at work.

Dates Fri 9-Thu 15 Oct

Times 11am-3pm

Duration 4hr each day

Venue Visitor Information Centre Courtyard
66 Commercial Rd Port Adelaide

Map Ref K14



New Spudland

SPUD – Special Projects Under Development

Spark your imagination, have a giggle and be intrigued by New Spudland, a fictitious suite of designs for the upgrade of Port Adelaide by the award winning SPUD team.

Dates Thu 8-Fri 16 Oct

Venue Lighthouse Hub Port Adelaide

Map Ref H12



Flock

The Port Festival

Watch out for flocks of native birds taking over windows of the Old State Bank site and the Port Mall.

Designed by Lara Torr.

Dates Thu 8-Fri 16 Oct

Venue Old State Bank site and the Port Mall windows
St Vincent St Port Adelaide

Map Ref L13



Bonsai Blossoms

Jaqueline Barmentloo

An evening lit window of 2D and 3D works by artist Jaqueline Barmentloo, exploring the theme of the Bonsai. Bonsai Blossom is a reflection on the Port's continual transformation, not only of its landscape, but its commerce, people and culture.

Dates Thu 8-Fri 16 Oct

Time 7.30pm-10.30pm

Venue In-fringed Design - office window
33 Commercial Rd Port Adelaide

Map Ref J14



Jenkins Street Boatyards - intricacies and memories

James Bateman

A beautiful photographic exhibition, taken over the past two years at the Jenkins Street Boatyards.

Archeologist and photographer James Bateman presents a series of work that shows the intricate detail inside and outside these historic boatyards which have now gone forever.

With the physical and cultural landscape, historical architecture and ambience of this site irretrievably changed, public documentation of the site is essential to our cultural memory. This visual archeology exhibition shows the nuances of the Jenkins Street Boatyards, and the character, architecture and details of boat building in Port Adelaide.

Dates Thu 8-Fri 16 Oct

Time 9am-5pm

Venue Lipson Street Café (former)
117a Lipson St Port Adelaide

Map Ref J15

Visual Arts
& Installation

Rust

Tony Kearney

An exhibition to celebrate rust and to reflect on the culture of corrosion and the corrosion of culture. Rust artists include Kirsten Coelho, Grant Hancock, Sue Lorrain, Annalise Rees, Peter Johnson, Deb Jones, Sandra Elms, Danica Gacesa McLean, Bruce Nuske, Johnnie Dady, Trevor Wren, Sandy Elverd, Mark Thomson and others. Curated by Tony Kearney

Rust will be opened by Bryan Dawe, a Birkenhead boy, Fri 9 Oct at 5pm.

Dates Fri 9-Sun 18 Oct

Time 11am-4pm

Venue Black Diamond Gallery
66 Commercial Rd Port Adelaide

Map Ref K14



Allure

Country Arts SA

Glass, metal and paper works by Cindy Durant.

What might be sitting on the bottom of a sea bed or growing on a tree...

An exploration of textures, both actual and visual, real or imagined, glass, metal or paper. Inspiration is found in the natural world....the sea, land and sky, plant and animal life, soil and sand, fable and lore.

Dates Tues 6 Oct-Fri 20 Nov

Time 9am-5pm Weekdays

Venue New Land Gallery
2 McLaren Pd Port Adelaide

Map Ref H13



Maintaining Culture through Art

Nikki Carabetta

An exhibition that celebrates Aboriginal people and culture through art, respecting the Kurna people and their connection to the coastal areas of Port Adelaide.

All artwork on show will be for sale, with part proceeds going to Tauondi College to promote Aboriginal education

Dates Thu 8-Fri 9 Oct; Mon 12-Fri 16 Oct

Time 9am-3pm Mon-Fri

Venue Tauondi College
1 Lipson St Port Adelaide

Map Ref X24

Ngura Wiru Winkiku Arts

Better World Arts

From the desert to the sea...celebrating the powerful culture and cosmology of the Anangu people, from the remote lands of northern South Australia.

Beautiful rugs, cushions, paintings and handicrafts which all tell a story of a unique people, many of whom have now made the Port Adelaide region their home.

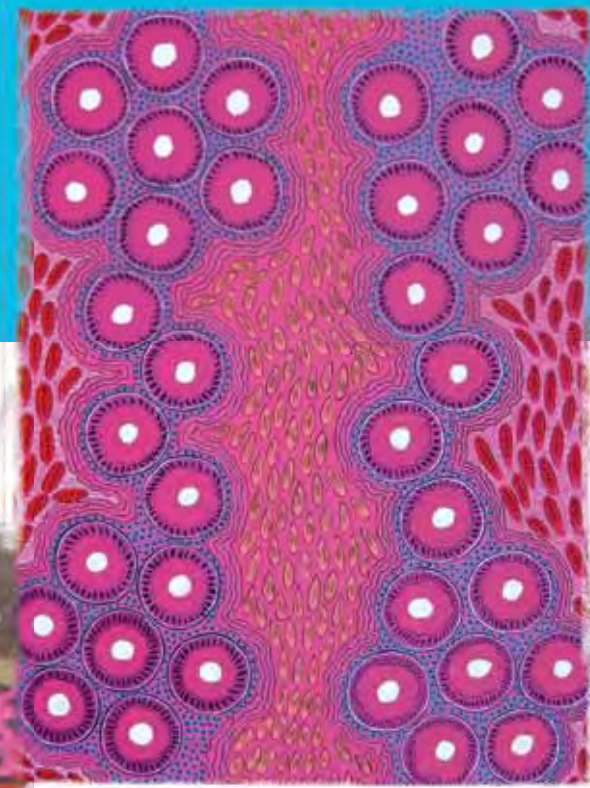
Come and visit, you may even get the opportunity to meet and see the artists at work.

Dates Thu 8-Fri 16 Oct

Time 10am-4pm Mon-Sat; 11am-4pm Sun

Venue Better World Arts
144 Commercial Rd Port Adelaide

Map Ref O16



Port Misery?

Western Region Supported Residential Facilities (SRF) Project and NEAMI

In its early days of settlement Port Adelaide was known colloquially as Port Misery. Through the years this label has stuck. Is this fair?

An exhibition of new works by local artists depicting personal experiences of life, places and spaces in the Port.

Dates Thu 8-Fri 16 Oct

Time 12-4pm

Venue Showroom Corner of Nelson St & Nile St (west) Port Adelaide

Map Ref K9



Back Streets, Main Roads

Jackalope Studio Gallery

An exhibition of water colour paintings by Simon Mills, showing the character of Port Adelaide from a different perspective.

Dates Thu 8-Fri 16 Oct

Time 11am-5pm

Venue Jackalope Studio Gallery
19 Calton St Port Adelaide

Map Ref J15



Visual Arts & Installation

Quest for the South Magnetic Pole

SA Maritime Museum

It was a search that obsessed explorers and scientists for more than 150 years, risking their lives to plant a flag at a shifting point on the Earth's surface.

This exhibition explores the perilous ship voyages, epic sledging journeys and bitter international rivalry involved in one of the longest quests in exploration history.

Dates Thu 8-Fri 16 Oct

Time 10am-5pm

Ticket Price Museum Entry
\$8.50A \$6.50Con \$3.50C \$22 F

Venue SA Maritime Museum
126 Lipson St Port Adelaide

Map Ref I16



Councillor Carol Martin Millinery Competition & Exhibition

*The Annie Rennie Chapter of the
Port Adelaide Enfield Chamber of Commerce*

An exhibition to really get heads turning.

See one-of-a-kind headpieces to inspire the imagination leading up to the spring racing carnival. Millinery designs crafted by competition entrants, using selected materials supplied by St Vincent de Paul, and sponsored by Port Adelaide Enfield Councillor Carol Martin – a true trifecta. Winners will be announced at Adventures on the High Tea – see pg 41 for event details.

For information on how to enter contact Jaqueline on ARC@infringed.com.au.

Dates Thu 8-Fri 16 Oct;
Competition entries close Fri 25 Sept 2009

Time 10am-4.30pm

Ticket Price \$20 Millinery Competition Entry
Exhibition Entry Free

Venue St Vincent de Paul's
263 St Vincent St Port Adelaide

Map Ref J17

It's a Beautiful Day

Kalyna Micenko, Bob Daly, Pedro Lowe, Isingyah Temple, Kurt Florimond, Duree Sameen

A magical oasis full of colour and humour that focuses on the small picture happening in the world today... the delight of big blue skies, rainy days with furry friends, peace, love and all that jazz. A group of artists – from the Port, the Hills, Stinky Bay and faraway Pakistan come together, despite long distances between them, to create this warm and uplifting exhibition.

Dates Opening Wed 7 Oct 7pm; Thu 8-Mon 19 Oct

Time 11am-5pm

Venue Gaff Gallery 25 Divett St Port Adelaide

Map Ref G16

Dark & Dirty

Trevor Wren and Danica Gacesa McLean

An exhibition of sculptures, drawings & photographs. Two local artists shed light on the dark recesses of Port Adelaide's eclectic post industrial landscape.

Dates Sat 10-Fri 16 Oct

Time 10am-4pm Sat 10-Sun 11 Oct;
11am-3pm Mon 12-Fri 16 Oct

Venue PD Gallery 8a Todd St Port Adelaide

Map Ref I17



Parallels of Parallels

Lucy Thurley and Gary Critchley

A journey through gaol. Two artists spend a year writing to each other across a great divide. Together they have journeyed into a darkness full of passion and possibility. The resulting exhibition is an exploration of lives behind gaol walls - and behind the conscious mind.

Supported by Community Arts Grant -
City of Port Adelaide Enfield

Dates Thu 8-Fri 16 Oct; Launch Sat 10 Oct 5pm

Time 11am-5pm

Venue Old Historic Holding Cells
Port Adelaide Visitor Information Centre
66 Commercial Rd Port Adelaide
& 49-51 Commercial Rd Port Adelaide

Map Ref K14



Pixels and Propane

Country Arts SA

Digital works and jewellery by Kerry Youde.

Kerry is an artist living and working in Burra, country South Australia. A strong interest in photography, with the lure of the possibilities inherent in digital manipulation and vector generation, sit comfortably with tactile explorations in copper.

Dates Tues 6 Oct-Fri 20 Nov

Time 9am-5pm Weekdays

Venue New Land Gallery
Foyer Space 2 McLaren Pd Port Adelaide

Map Ref H13



'mostly' STEAM

John Ford F.A.S.M.A

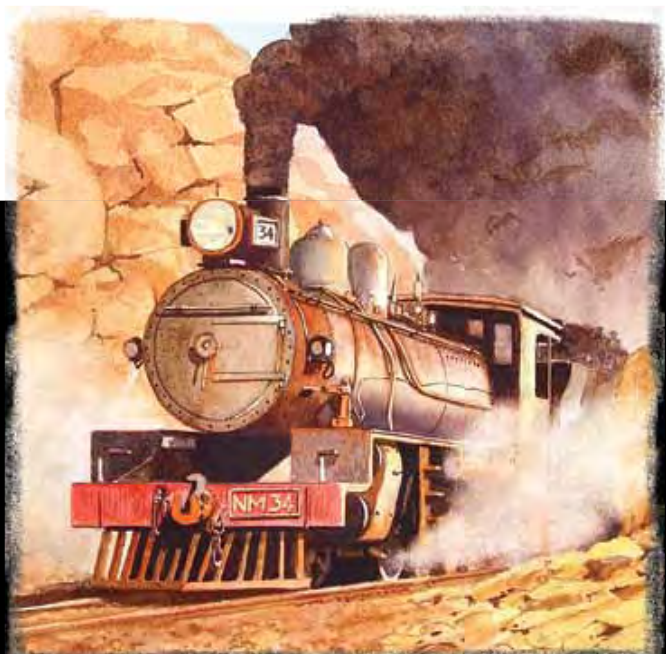
A visual arts exhibition which will take you on a journey to show you the power of "mostly Steam", whether by ship, train or land transport. The exhibition is a combination of water colours and acrylics.

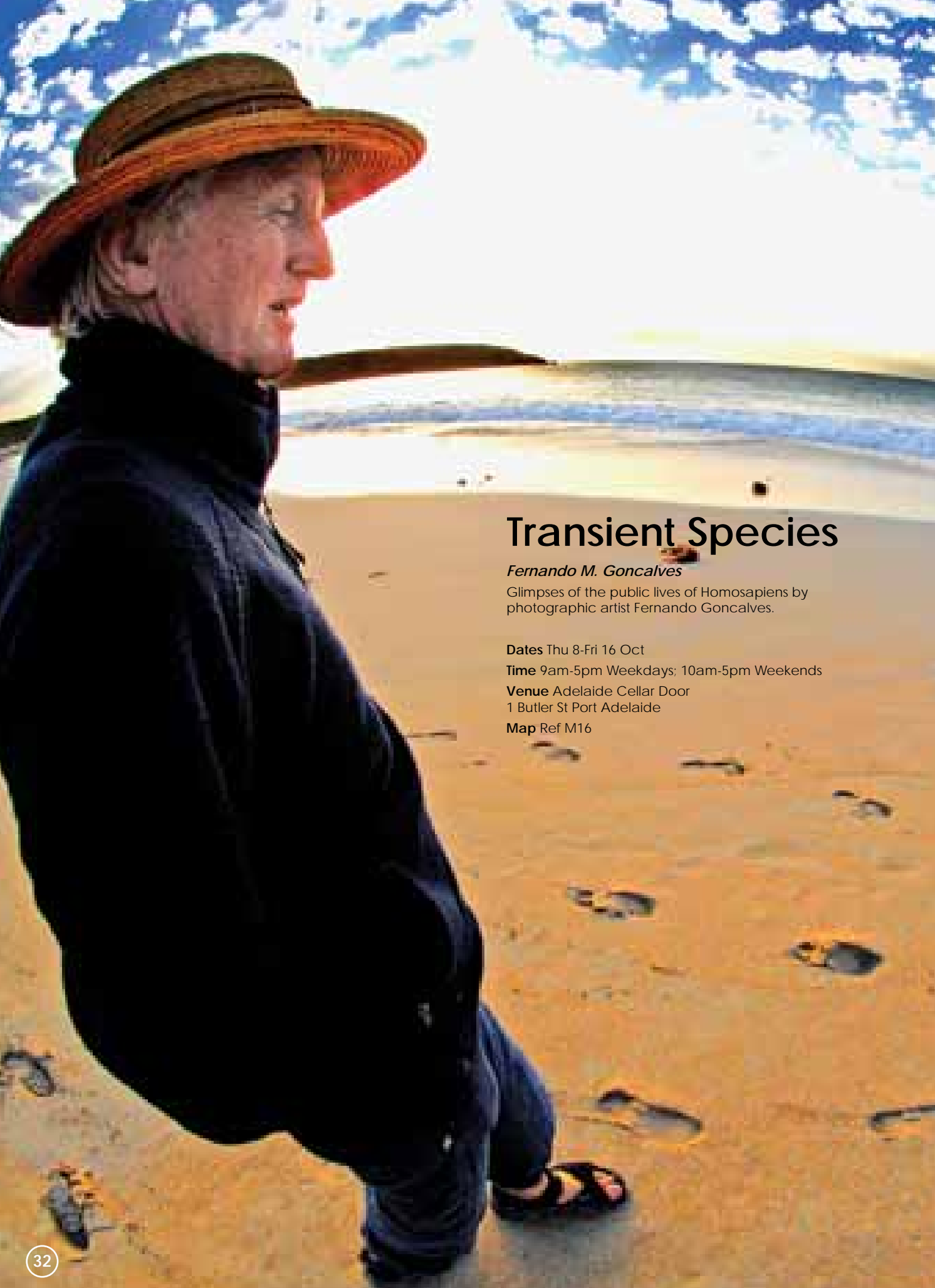
Dates Thu 8-Fri 16 Oct; opening Sat 10 Oct 2pm

Time 10am-10pm

Venue The Railway Hotel
247 St Vincent St Port Adelaide

Map Ref J16





Transient Species

Fernando M. Goncalves

Glimpses of the public lives of Homosapiens by photographic artist Fernando Goncalves.

Dates Thu 8-Fri 16 Oct

Time 9am-5pm Weekdays; 10am-5pm Weekends

Venue Adelaide Cellar Door
1 Butler St Port Adelaide

Map Ref M16

Dolphin Told Me

Herbert Neetzel

An exhibition that weaves ancient Greek mythological and contemporary personal elements into slightly mysterious compositions to create both the calming, dreamlike and the exuberantly joyful Port River Dolphins with the feelings of otherness and nostalgia. Local artist Herbert Neetzel sees dolphins' weakness for human singing as a reliable indicator and mirror of the present day human condition; mutual freedom and responsibility.

Dates Thu 8-Fri 9 Oct; Mon 12-Thu 15 Oct

Time 10am-3pm Mon-Fri

Venue Whale and Dolphin Conservation Society (WDCS)
27 North Pd Port Adelaide

Map Ref L12



All at Sea

Studio Potters SA Inc

A selection of ceramics inspired by the sea – above and below the surface.

Dates Thu 8-Fri 16 Oct

Time 7.30am-5pm Mon-Fri; 8am-4pm Sat-Sun

Venue Café Foreyou 5/255 St Vincent St Port Adelaide

Map Ref J17

Port Outdoor Maritime Art Display

Rotary Club of Port Adelaide

Local artists capture the heart of the Port Adelaide people and environs, presenting its past and present beauty on canvas. All works available for purchase

Dates Thu 8-Fri 16 Oct

Time 10am-4pm

Venue Port Admiral Hotel (under the verandah)
55 Commercial Rd Port Adelaide

Map Ref J14

Visual Arts & Installation

Glimpses of Port Adelaide Reality

People Promoting Mental Health

See other people's reality and create your own. Come and visit this unique multimedia exhibition at The Cottage Kitchen in the heart of St Vincent St. The digital images, slide shows and soundscape are of people, places and landscapes, produced by local people through new eyes. Bring 2-3 photos to produce your own scrapbook page, make a badge and enjoy hot scones and a cuppa.

Dates Fri 9 Oct; Sun 11-Fri 16 Oct

Time 12pm-3pm

Venue The Cottage Kitchen
160 St Vincent St Port Adelaide

Map Ref L12

Spring to Life

Edgewater Gallery

The colours and energy of Spring are depicted in these art works of acrylic on canvas. All paintings available for purchase.

Dates Thu 8-Fri 16 Oct

Time 10am-5pm

Venue Edgewater Gallery
87 Carlise St Ethelton





SWANSONG

*Port Adelaide Artists Forum
and Spin FX Australia*

This stunning inflatable sculpture of a giant black swan has been created by 50 young people and community members from Kurruru Youth Performing Arts, Tauondi College and Le Fevre High School, working with guest artist Evelyn Roth. Evelyn's 'Nylon Zoo' at WOMADelaide is well known and loved by many South Australian children.

Kudlyo (the Kaurna name for the Black Swan) has morphed with images of estuary birds and Port river creatures, along with mangrove trees and native vegetation to create SWANSONG.

As well as featuring at the Lighthouse Hub, SWANSONG will travel during the Port Festival to local schools and present a storytelling experience for young people, helping them understand the importance of keeping our waterways clean and healthy for all to enjoy.

SWANSONG is a partnership between the Port Adelaide Artists Forum and SpinFX Australia, LeFevre High School, Kurruru Youth Performing Arts and Tauondi College.

Dates Fri 9-Sun 11 Oct

Time 11am-4pm

5-9pm Sat 10 Oct

Ticket Price Free

Venue Lighthouse Hub Commercial Rd
Port Adelaide

Map Ref I13



Government
of South Australia
Arts SA



FOUNDATION FOR
Young Australians

GIANT Board Games & Ferry Rides

The Port Festival and Newport Quays

If you are young or young at heart you will enjoy the assortment of giant board games on offer along the Newport Quays Waterfront Promenade during the weekend of the Port Festival. There are ten games to choose from, so come and test your skills, relive your childhood or keep the kids busy for hours with the Bean Bag Toss, Funky Feet, Hopscotch, Playhut 3 in 1 Sports Arcade, Connect 4, Putter Pool, Putt Putt, Giant Lego or Obstacle Billiards.

There will be ferry rides on the historic Archie Badenoch from the Queen's Wharf near the Lighthouse Hub to Newport Quays between 12noon and 4.30pm on Saturday and Sunday.

Ferry Departure Times

Queens Wharf 12noon, 1pm, 2pm, 3pm, 4pm

Newport Quays 12.30pm, 1.30pm, 2.30pm, 3.30pm, 4.30pm

Dates Sat 10-Sun 11 Oct

Time 11am-4pm

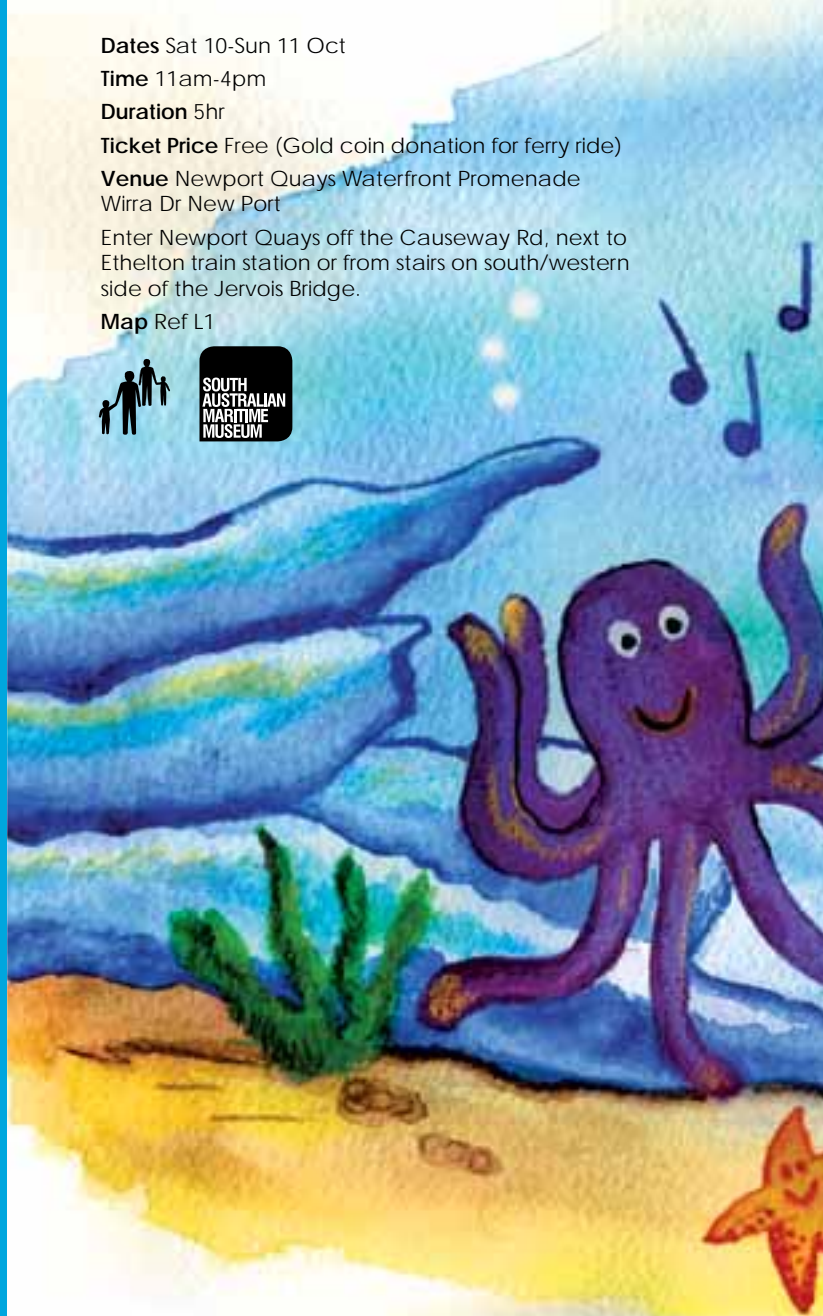
Duration 5hr

Ticket Price Free (Gold coin donation for ferry ride)

Venue Newport Quays Waterfront Promenade
Wirra Dr New Port

Enter Newport Quays off the Causeway Rd, next to Ethelton train station or from stairs on south/western side of the Jervois Bridge.

Map Ref L1



Rock Pool!

A dance party for kids

SA Maritime Museum and the Port Festival

Hey kids, put on your dancing shoes and get ready to rock at the special 'underwater' dance party for kids.

Dive into the Rock Pool as Adelaide's favorite beat master DJ TriP takes you on a rock and rollicking musical journey, sampling beats and melodies from across the world. His irresistible sounds might get your parents out on the dance floor too!

Come in fancy dress for the underwater theme - or just dress to party!

Dates Fri 9 Oct

Time 11am (4-7 year olds & parents/caregivers)
2pm (8-11 year olds & parents/caregivers)

Duration 60min (Museum open 10am-5pm daily)

Ticket Price Bookings essential call 8207 6255
Museum entry \$8.50A \$6.50Con \$3.50C
(kids under 5 free) \$22F

Venue SA Maritime Museum
126 Lipson St Port Adelaide

Map Ref I16

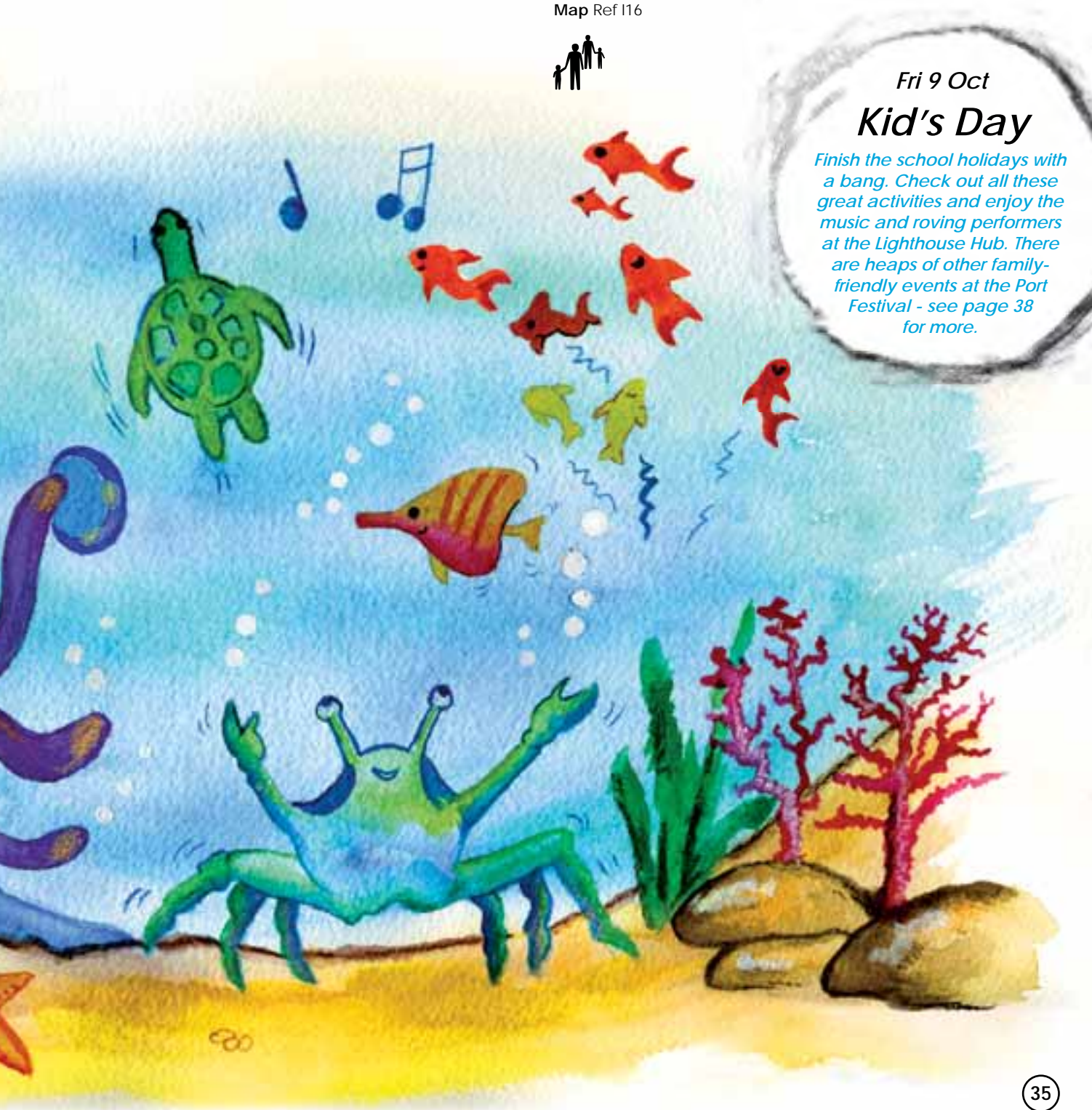


Especially
for Kids

Fri 9 Oct

Kid's Day

Finish the school holidays with a bang. Check out all these great activities and enjoy the music and roving performers at the Lighthouse Hub. There are heaps of other family-friendly events at the Port Festival - see page 38 for more.



Puppets Galore

Port Community Arts Centre

A chance for children to create puppets that come 'alive'!

Puppets Galore are innovative workshops for children that cover the range of different puppets - Ban Racu, Glove, Shadow and Marionette puppets. The age of the children will determine the type of puppets constructed. All materials will be supplied. Tutor: Belinda Blesing BA (Visual Arts)

Dates Fri 9 & Sun 11 Oct

Time Class 1: 9.30-11.30am; Class 2: 12.30-2.30pm

Duration 2hr

Ticket Price \$10 per child

Bookings essential - call John Ford on 8449 3987

Venue Port Community Arts Centre
66 Commercial Rd Port Adelaide

Map Ref K14



Kids Art Workshops

at the Seetainer

The Port Festival

Come along kids and try out painting, making and imagining to a sea creature theme! Local artist and experienced kid's art teacher Penny Mortimer will engage children with fun art and craft activities at the vibrant Seetainer.

Dates Fri 9-Sun 11Oct

Time 12noon-3pm

Duration Turn up throughout this time, different activities vary in duration. There may be a wait, depending on numbers participating.

Ticket Price Free

No bookings required however there will be a limit to the number of kids able to participate at any one time. Parents must supervise children during the activities.

Venue The Seetainer Lighthouse Hub
Commercial Rd Port Adelaide

Map Ref I13



Fire + Flight

The Port Festival

Fire + Flight celebrates the birds and boats of our river as symbols for the dreams of children.

A magical boat sculpture, created by artists Tsubi Du and Juniper Van-den-Ende, will be on display during the festival, with children encouraged to tie on their dreams and hopes for the future.

Get your children involved in this inspiring project about hope and renewal.

Workshops

Children can make cane and paper sculptures of river birds with artists Tsubi and Juniper at the Fire + Flight workshops.

Dates Fri 9-Sun 11 Oct

Time 11am & 3.30pm Fri 9-Sat 10 Oct;
11am Sun 11 Oct

Duration 1hr 30min

Ticket Price Free

Max 25 children per workshop. Bookings recommended. Call 8405 6560. Parents must supervise children during the workshops. No age limit.

Venue Port Adelaide Town Hall 34 Nile St
Port Adelaide

Map Ref J13

Final Night Parade

On the Festival's final night, all children and families are invited to a beautiful parade of the bird sculptures, ending at Harts Mill. The boat will become a fire sculpture on the river, in the universal ceremony of burning hopes and dreams to send them into the world.

After the parade of Fire + Flight, stick around for the projection show at Harts Mill Inhabited (refer pg 19)

Dates Fri 16 Oct

Time 7pm

Duration 60min

Ticket Price Free

Venue Commences at the Lighthouse
and ends at Harts Mill

Map Ref H12

Outdoor location please dress warmly!





Family Highlights

There are family-friendly events galore throughout the Port Festival program – this symbol denotes that the event is especially suitable for children and families.

We recommend that you check out the following events and activities. If you are unsure about age suitability, please contact the Port Festival office for advice by calling 8405 6560.

Purrutendi - opening night
performance pg 4

Umbrella Fest pg 9

Luminosity pg 5

Fish Opera pg 5

Flinders Port Sunday on the River pg 6

Roving performers pg 8

The Tiny Top pg 11

Wakaid Girl-Lynhurst Kid pg 12

2-Dimensional Life of Her pg 10

Harts Mill Inhabited pg 19

Car-Cophony pg 18

Port Portraits (National Railway Museum) pg 21

Dolphins in the Port pg 22

Birds of a Feather pg 25

The Weaving River pg 25

Silken Waves pg 25

Aviation Engine Runs pg 42

Aviation Museum Twilight Opening pg 42

One & All Open Ship pg 42

Port Festival on Foot pg 43

Please note that there are other festival events of a more general nature which might also be appealing to some children and families.



Planet Teal Zone

Port Adelaide Football Club

An interactive area for children aged 5-12 years which features games, performances, healthy food and give-aways for the whole family. Come and see Thunda and dance with the Power Funk Squad.

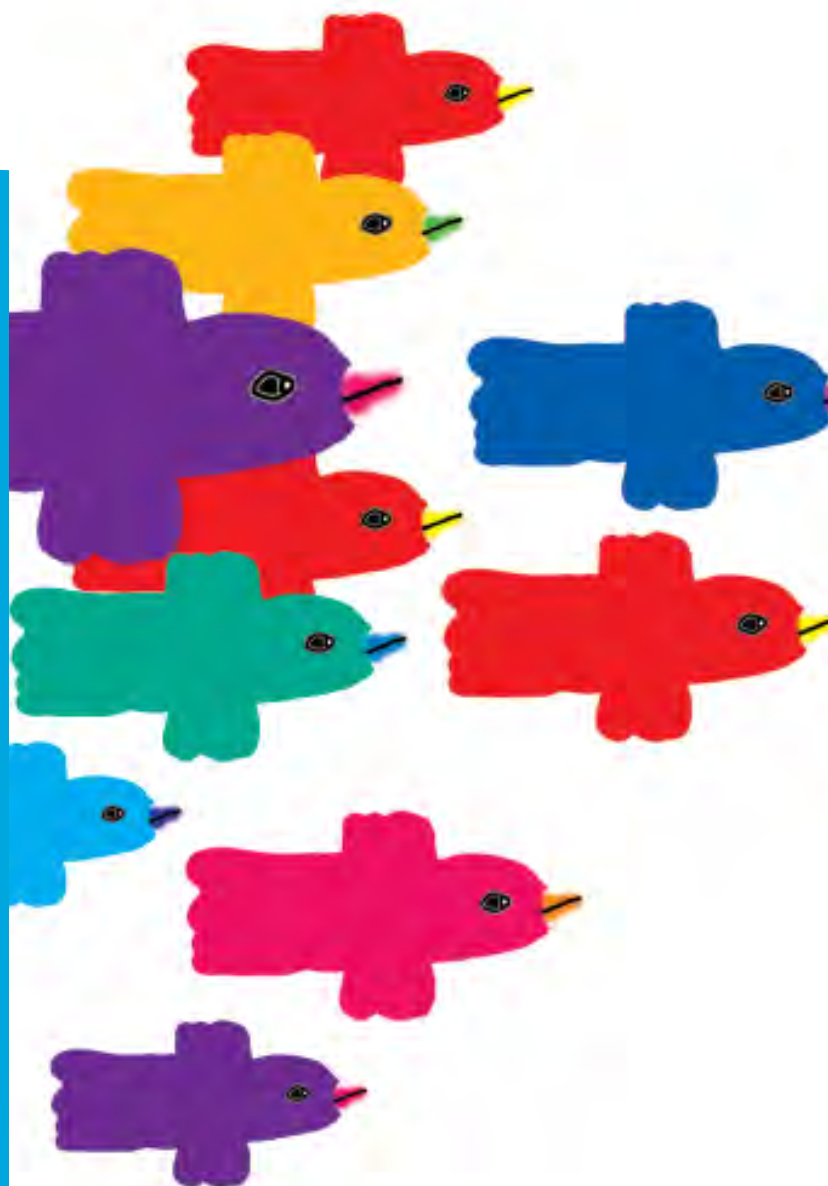
Dates Fri 9-Sat 10 Oct

Time 11am-4pm each day

Ticket Price Free

Venue Lighthouse Hub
Port Adelaide

Map Ref G14



Beautiful Birds

Night Time Story Time

Port Adelaide Enfield Public Library Service

It's pyjama storytelling time at Port Adelaide Library.

Beautiful Birds is an evening story session for children between 3 – 12 years and their caregivers that will include stories, rhymes and crafts around birds. Come dressed in your PJs for these beautiful bedtime stories.

Dates Thu 15 Oct

Time 6.30pm

Duration 60min

Ticket Price Free

Bookings essential. Call Port Adelaide Library on 8405 6580

Venue Port Adelaide Library
cnr Dale St & Church St Port Adelaide

Map Ref P12



A Book Safari

The Port Festival, Port Adelaide Enfield Public Library Service and Splash Theatre Company

South Australia's much loved children's theatre company Splash Theatre presents A Book Safari, bringing to life five wonderful stories that take us from an exotic eastern bazaar to the Sahara desert, the jungles of Kenya and even other planets.

Take a safari with the following books: Aziz the Storyteller by Vi Hughes, Sanji and the Baker by Robin Tzannes, The Little Prince by Antoine de Saint-Exupery, Rumble In The Jungle by Giles Andreae and Safari Diary by Hudson Talbott.

Dates Fri 9 Oct

Time 2pm

Duration 50min

Ticket Price Free. Bookings essential.
Call Port Adelaide Library on 8405 6580

Venue Port Adelaide Library
cnr Dale St & Church St Port Adelaide

Map Ref P12



Encounters with Port Characters

Jenn Manders

Keep a lookout for all sorts of characters as you wander around the Lighthouse Hub.

Colourful Portside characters have been created by local children through drama workshops with local artist Jenn Manders. The young performers will rove around, keeping you entertained and giving you insights into the people who have made up the Port.

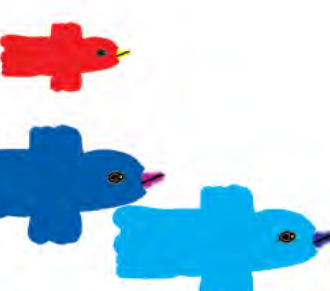
Dates Fri 9 Oct

Time 11am; 1pm; 3pm

Ticket Price Free

Venue Lighthouse Hub
Commercial Rd Port Adelaide

Map Ref I13



Especially
for Kids

Turn the Tide Puppet Show

The Seahorse Farm

Enter the magical yet fragile world of the Leafy Seadragon through this shadow puppet show.

We also take a broader look at the ocean and coast as we go on an imaginary beach walk and explore the theme of caring for our oceans, coast and beaches.

Dates Thu 8-Fri 9 Oct

Time 10am (doors open 9.30am)
(The Seahorse Farm open 11am-4pm daily.
12noon on Puppet Show days)

Duration 60min

Ticket Price Includes entry to The Seahorse Farm
\$10.50A \$10Con \$9.50C \$34F (2A/2C) \$36F (2A/3C)
Limited places – entry is based on first to arrive.

Venue The Seahorse Farm
20 Divett St Port Adelaide

Map Ref H16



Animals Anonymous

The Port Festival

Ever wondered what's the most dangerous spider in the world? Or why Geckos lose their tails? Or how you'd go being faced with crocodiles and pythons?

Find out the answers to these questions and more at the Animals Anonymous marquee, where the fun and exciting wildlife shows feature crocodiles, gliders, goannas, potoroos, pythons and many more...

Dates Fri 9 Oct

Time 11am-4pm

Duration Drop in to see the animals anytime

Ticket Price Free

Venue Lighthouse Hub
Commercial Rd Port Adelaide

Map Ref I13



Hip, Hip Hooray, it's our 25th Birthday!

Dale Street Women's Health Centre, Kurruru Youth Performing Arts Inc, Port Community Arts Centre and Vitalstatistix Theatre Company

Celebrate the 25th birthday of four iconic arts and community organisations in the Port. Share a piece of birthday cake as we look back on the last quarter of a century and look forward to the next! Everyone welcome.

Dale Street Women's Health Centre was established by local women to improve women's health & well-being and to give them a stronger voice. Staffed by women for women of diverse backgrounds in the western suburbs, Dale Street provides free services including counselling, groups, workshops, medical services and health information.

Kurruru Youth Performing Arts is proudly Australia's leading performing arts company for young Aboriginal and Torres Strait Islanders. It grew out of Port Youth Theatre Workshop and in 2003 became Kurruru, meaning 'circle' in Kaurua language. Kurruru is committed to providing quality performing arts opportunities for Aboriginal and Torres Strait Islander children, young people and their communities across South Australia.

Port Community Arts Centre is a community-based, membership organisation located in the historic Black Diamond Centre. PCAC provides a focal point for existing and aspiring artists and learning opportunities for people to acquire and enhance their artistic skills. It operates the open-access Black Diamond Gallery where artists can showcase their talents.

Vitalstatistix Theatre Company exists to support, curate and produce high quality, provocative and challenging live performance, to engage and entertain diverse audiences and contribute to Australian culture. A catalyst and incubator for innovative contemporary arts practice, Vitals creates and supports the construction and presentation of new work through devised performance, new media, literature and hybrid projects.

Supported by the Port Festival.

Date Sat 10 Oct

Time 2pm

Duration 60min

Ticket Price Free

Venue Waterside Workers Hall
11 Nile St (west) Port Adelaide

Map Ref K8



Second to None

An Aboriginal and Maritime Journey
Documentary Film Launch

Kurruru Youth Performing Arts

Second to None was a history-making outdoor performance and installation event presented over four nights in 2007 by Kurruru Youth Performing Arts and Vitalstatistix Theatre Company. It took audiences through four significant sites celebrating the past, present and future of the Port.

This film brings together the people, creativity and passion of Second to None. Featuring interviews with the creators and excerpts from the performance, this film demonstrates the power of art to tell the history of a community and look to its future. Following the screening will be a panel discussion featuring some of the artists involved in shaping the Second to None performance.

Supported by the Port Festival.

Date Sat 10 Oct

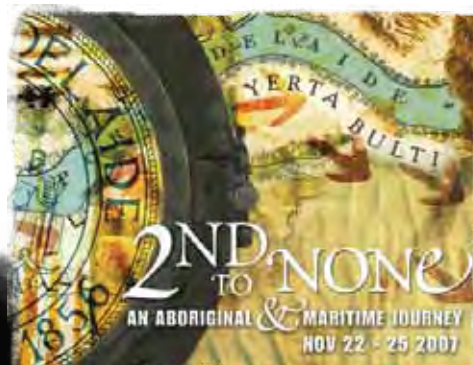
Time Film 3pm; Discussion Panel 3.30pm

Duration 1hr15min (Film 30min)

Ticket Price Free

Venue Waterside Workers Hall
11 Nile St (west) Port Adelaide

Map Ref K8



Wild Women Markets

Jackalope Studio Gallery

An eclectic mix of art and craft by local woman artisans in an outdoor market setting.

Date Sat 10-Sun 11 Oct

Time 10am-5pm

Duration 7hr

Ticket Price Free

Venue Jackalope Studio Gallery
19 Calton St Port Adelaide

Map Ref J15

Adventures on the High Tea

Anna Rennie Chapter of the Port Adelaide Enfield Chamber of Commerce

Enjoy an afternoon of posh nosh, fine music by the **Zephyr Quartet** and fabulous stories of women who contributed to the rich history of the Port.

Join the Anna Rennie Chapter at Adventures on the High Tea! Topped off with a showcase of the top 20 designs from the Councillor Carol Martin's Millinery Competition. Winners will announced during the afternoon.

Date Wed 14 Oct

Time 2pm

Duration 2hr

Ticket Price \$28 ARC Members \$25 Dress: Hat

Bookings Contact Jaqueline ARC@infringed.com.au or Port Adelaide Enfield Chamber of Commerce call 8305 9703

Venue Waterside Workers Hall 11 Nile St Port Adelaide

Map Ref K8



Eclectic Port Events

Op Shop Hop

Port Adelaide Visitor Information Centre

Hop on board for an enlightening bus tour of the Op Shops of Port Adelaide and Semaphore! Why not bring along six items – one to donate to each Op Shop on the Tour and discover a new and environmentally friendly way of shopping – recycling your pre-loved wares and buying unique new gear too! To complete the perfect day out, why not stay on and join the Anna Rennie Chapter at 'Adventures on the High Tea'!

Date Wed 14 Oct

Time 10am-1pm

Duration 3hr

Ticket Price \$5 Bookings essential. Call 8405 6560 to book.

Venue Meet at the Port Adelaide Visitor Information Centre
66 Commercial Rd Port Adelaide

Map Ref K14

Beer Appreciation

Port Dock Brewery Hotel

Take a fascinating tour of the Port Dock's working micro-brewery and discover some of the secrets to brewing great beer. Complete the experience with a beer tasting at the Brew Bar and sample some of the hotel's specialty beers, brewed locally on premises, including Black Bart Stout (3 gold medals), The Old Preacher Strong Ale (silver & bronze medal) and Ginja (2 bronze medals). Tantalise your taste buds with an array of 20 plus boutique beers to choose from, including some unusual flavours such as a cherry and grapefruit beer!!!

Dates Fri 9-Sun 11 Oct

Time 11am; 2pm; 4pm

Duration Tour 30min

Ticket Price Brewery tours free

\$10 beer tasting includes sample of 6 different beers

Venue Port Dock Brewery Hotel Todd St Port Adelaide

Map Ref H17





Aviation Engine Runs

SA Aviation Museum

Shut your eyes and take a trip back in time – complete with vintage aircraft noise.

Listen to the Rolls Royce Merlin MK3, Pratt & Whitney 1340, Armstrong Siddley Cheetah and the Rotary Gnome, now 100 years old, in what's believed to be the only aircraft 'engine run' staged by any museum in Australia.

Plus... Helicopter Joy Flights, Sausage Sizzle, Model Aircraft Display.

Date Sun 11 Oct

Time Engine Run 1pm & 3pm
(Museum open 10am-4pm daily)

Duration 1-2hr

Ticket Price \$12A \$6C

Venue SA Aviation Museum
Lipson St (south) Port Adelaide

Map Ref O19



One & All Open Ship

SA Tall Ships

Ahoy Me Hearties. Come aboard the One & All for a tour of the historic ship which has recently undergone a major refit. Come and see her restored to her former glory and imagine yourself sailing the high seas.

Dates Fri 9-Sun 11 Oct

Time 11am-4pm

Ticket Price \$2 donation per person

Venue McLaren's Wharf
river end of Lipson St Port Adelaide

Map Ref F14



Aviation Museum Twilight Opening

SA Aviation Museum

Experience the Aviation Museum under lights. Enjoy the exhibits, including the Mark 3 Spitfire and F27 Friendship, interactive displays and the history of flight in South Australia from 1910. Also featuring Die Lustige Kapella - The Fun Band (see pg 17).

Date Fri 9 Oct

Time 5-9pm

Duration 4hr

Ticket Price \$8A \$6Con \$4C \$20F

Venue SA Aviation Museum
Lipson St (south) Port Adelaide

Map Ref O19



Friendly Street Poets

Port Adelaide Enfield Public Library Service and Friendly Street Poets Inc

Sit back and simply enjoy the poetry and light refreshments or strut your stuff in the open mike session with the Friendly Street Poets. Submit two copies of your poems to be considered for publication in the Friendly Street annual anthology. Now in its 34th year, the Friendly Street Poets Inc is the longest-running poetry reading group in the southern hemisphere.

Dates Sat 10 Oct

Time 1.30pm

Duration 2hr

Ticket Price Free

Venue Port Adelaide Library
corner of Dale St & Church St Port Adelaide

Map Ref P12



Port Vintage Walks

Port Adelaide Visitor Information Centre

Step back in time on a guided tour of the Port Adelaide State Heritage Area – the historic maritime heart of South Australia and one of its earliest settlements. Experience the Port's past in a precinct with the State's largest concentration of colonial buildings.

Date Sun 11 & Thu 15 Oct

Time 2-3pm

Duration 60min

Ticket Price Gold Coin Donation

Bookings essential Call 8406 6560

Venue Port Adelaide Visitor Information Centre
66 Commercial Rd Port Adelaide

Map Ref K14



*Pick up a
Port Festival on Foot
walking tour of the visual
arts and installations on
offer from the
Port Adelaide Visitor
Information Centre*

Arresting Tales

Port Adelaide Visitor Information Centre

A rare opportunity to explore parts of Port Adelaide's colonial history from within the walls of its imposing 1860's police station. Take a night tour of this atmospheric building with vintage uniformed guides. Be captivated by tales of the Port's colourful past!

Date Mon 12 & Tue 13 Oct

Time 7pm

Duration 1hr 30min

Ticket Price Gold Coin Donation

Bookings essential Call 8405 6560

Venue Port Adelaide Visitor Information Centre
66 Commercial Rd Port Adelaide

Map Ref K14



Cool Jazz & Art

Where Art Meets Business

North West Business Development Centre

Come and view local art, meet local business, taste wine, and enjoy some nibbles, while relaxing to some live jazz. The North West Business Development Centre is proud to show its ongoing support of local artists and offer others the chance to network over a glass of wine or two.

Date Wed 14 Oct

Time 5.30pm

Duration 3hr

Ticket Price \$10 (includes wine tasting & food)

Venue Todd Street Business Chambers
6-8 Todd St Port Adelaide

Map Ref I17

Festival Forums

Harts Mill Inhabited Again?

Port of Adelaide Branch of the National Trust of SA

A forum to discuss community views about the future use of Harts Mill in the Port Waterfront Redevelopment. Hosted by former Port local Bryan Dawe and featuring a panel of local community speakers.

Date Sat 10 Oct

Time 4-6pm

Duration 2hrs

Ticket Price Free

Venue First Commercial Hotel
29 Commercial Rd
Port Adelaide

Map Ref I14



Don't know whether to laugh or cry...

The Port Festival

Artists, organisers, ratbags, comedians – Port Adelaide is full of them! An entertaining discussion on how artists and community organisers have kept alive the debate about the future of the Port, the effectiveness of cultural action in a changing community and the role of humour throughout. Speakers: Bryan Dawe - political satirist, writer and performer, Diat Alferink - Director of Kurruru Youth Performing Arts, Catherine Fitzgerald - director, writer and performer and Tony Kearney - Port of Adelaide Branch of the National Trust of SA

Date Sun 11 Oct

Time 5-7pm

Duration 2hrs

Ticket Price Free

Venue First Commercial Hotel
29 Commercial Rd
Port Adelaide

Map Ref I14



The art - and technology - of storytelling

The Port Festival

Three producers of new works at the Port Festival in conversation about the interplay of arts, technology, new media and storytelling. (It is recommended that participants see the new works prior to the forum). Speakers: Holly Owen from Real Time, creators of Saskia Falls (see pg 10), Heidi Angove, co-creator of Long Distance (see pg 24) and Cindi Drennan, creator of Harts Mill Inhabited (see pg 19) and Promise (see pg 24).

Date Friday 16 Oct

Time 3-5pm

Duration 2hrs

Ticket Price Free

Venue Waterside Workers Hall
11 Nile St (west) Port Adelaide

Map Ref K8



Natural treasures of the Port

Port Adelaide Residents Environment Protection Group

A chance to hear renowned experts discuss the history and future of the Port's unique natural environment. An update on the state of local plants, animals and habitats, including the river, coastline, dunes, and wetlands. Panel includes Dr Mike Bossley - Whale and Dolphin Conservation Society (WDCS) and Dr Greg Johnston - expert on the seabird breeding colonies in the Port River-Barker Inlet estuary.

Date Wed 14 Oct

Time 7-9pm

Duration 2hrs

Ticket Price Free

Venue First Commercial Hotel
29 Commercial Rd
Port Adelaide

Map Ref I14



Beautiful Birds - night story time

Turn the Tide Puppet Show

Fish Opera - Luminosity

Rock Pool! A dance party for kids

Fire + Flight - final night parade

Ferry Rides

A Book Safari - Splash Theatre

Planet Teal Zone

The Tiny Top

Puppet & art workshops
GIANT Board Games

family fun



port culture & heritage

live music

arts & performance

Port Vintage Walks

Long Distance

Second to None

Port Portraits

Flinders Ports Sunday on the River

Hip, Hip Hooray, it's our 25th Birthday!

Harts Mill Inhabited

Arresting Tales

Adventures on the High Tea

Purrutendi

Festival Forums

The Transatlantics

Sukatash

Sounds of the Sea

Rockin' the Boat

Ships & Sailors & Songs of the Sea

Adam Page Solo

Helix the Band

Umbrella Fest

Eric Marshall Quintet

Rock the Dock

The Last Farewell

Die Lustige Kapella - The Fun Band

Mr Buzzy

The Weaving River

Silken Waves

Saskia Falls

Glow - Taltaityai

Promise

Dolphins in the Port

Birds of a Feather

Car-Cophony

Cool Jazz & Art

20+ visual arts exhibitions

2-Dimensional Life of Her

Wakaid Girl - Lyndhurst Kid

The Black & White Club

On the River

	Fri 9 Oct	Sat 10 Oct	Sun 11 Oct
Fish Opera			
Laser Show		8pm 8.30pm 9pm	
Tom 'Diver' Derrick Bridge			
Special Openings		3pm	12noon 3pm
Cruising Yacht Club			
Convoy of Yachts		Enter 3pm	Depart 3pm
Royal SA Yacht Squadron			
Convoy of Yachts		Enter 3pm	Depart 3pm
MV Port Princess			
Cruise - Lunch available (1.5hr)	11am-12.30pm	11am-12.30pm	11am-12.30pm
Cruise - Lunch available (1.5hr)	1.30-3pm	1.30-3pm	1.30-3pm
Port River Dolphin Cruises			
Cruise - Lunch available (2hr)	12-2pm	12-2pm	11.30am-1.30pm
Cruise - Lunch available (2hr)		2.30-4.30pm	2-4pm
Spirit of the Port			
Cruise & Lunch (5hr)		11am-4pm	
SA Tall Ships			
One & All Open Ship		11am-4pm	11am-4pm
Falke	Moored	Moored	Moored
SA Maritime Museum			
Yelta	Moored	Moored	Moored
Archie Badenoch - Depart Queen's Wharf		12, 1, 2, 3 & 4pm	12, 1, 2, 3 & 4pm
Archie Badenoch - Depart Newport Quays		12.30, 1.30, 2.30, 3.30 & 4.30pm	12.30, 1.30, 2.30, 3.30 & 4.30pm
Royal Australian Navy		Navy Diving Demo	Navy Diving Demo

Navy Display

Check out the 'Sea Patrol' inflatable boat, diving demonstrations, submarine escape suit, AV Presentation on Navy operations and career advice

Date Sat 10 Oct-Sun 11 Oct

Time 11am-4pm



Lighthouse Hub

Fri 9, Sat 10 & Sun 11 Oct



Zucchini Rissolle with
Tzatziki & Chips

Kalamari & Chips

Keftedakia (meatballs)
with Tzatziki & Chips

Sweets



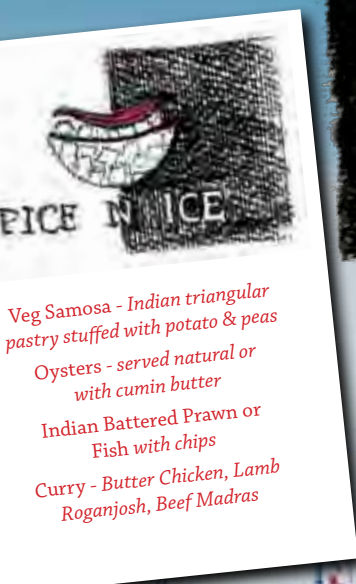
portobello

Traditional Southern Italian Bolognese Sauce
with Rigatoni pasta

Veal & Pork Meatballs with wood oven bread

Chicken & Mushroom Penne pasta

Arancini - "fried risotto dumplings"
with cheese, saffron & herbs



On the River & Festival Food

Yum Cha

Riverside Chinese Restaurant

Yum Cha is a tradition of families and friends gathering together on weekend mornings to eat small servings of different Chinese foods. Dishes will include prawn and scallop dumplings, pork buns and salt and pepper squid...to name just a few. This was a sell-out event at the 2007 Festival, so book early.

Dates Sat 10-Sun 11 Oct

Time 11pm-3pm each day

Ticket Price Bookings recommended.
Call 83412883

Venue Riverside Chinese Restaurant
3 Divett St Port Adelaide

Map Ref I14



Dockside Pirates

Dockside Tavern

Staff will be dressed in pirate theme all week with live music and a delicious menu featuring a Treasure Chest of fish, prawns, salt n pepper squid and hot chips.

Dates Thurs 8-Fri 16 Oct

Time 9am-12 midnight each day

Venue Dockside Tavern
130 Lipson St Port Adelaide

Map Ref G15



Eclectic Port Events

	Duration	Thurs 8	Fri 9	Sat 10	Sun 11	Mon 12	Tues 13	Wed 14	Thurs 15	Fri 16	Ref	Pg
Adventures on the High Tea	2hr							2pm			K8	41
Arresting Tales	1.5hr					7pm	7pm				K14	43
Aviation Engine Runs	1.5hr				1 & 3pm						O19	42
Aviation Museum Twilight Opening	4hr		5pm								O19	42
Beer Appreciation at the Port Dock	30min tour		11am, 2 & 4pm	11am, 2 & 4pm	11am, 2 & 4pm						H17	41
Cool Jazz & Art: Where Art Meets Business	3hr							5.30pm			I17	43
Festival Forum - Harts Mill Inhabited Again?	2hr			4pm							I14	
Festival Forum - Don't know whether to laugh or cry...	2hr				5pm						I14	
Festival Forum - National treasures of the Port	2hr							7pm			I14	
Festival Forum - The art - and technology - of storytelling	2hr									3pm	I14	
Friendly Street Poets	2hr			1.30pm							P12	42
Hip, Hip Hooray, it's our 25th Birthday	1hr			2pm							K8	40
One and All Open Ship	5hr		11am	11am	11am						F14	42
Op Shop Hop	3hr							10am			K14	41
Port Festival on Foot	varies	9am	9am	9am	9am	9am	9am	9am	9am	9am	K14	43
Port Vintage Walks	1hr				2pm				2pm		K14	43
Second to None - An Aboriginal and Maritime Journey - Documentary Film Launch	1hr 15min			3pm							K8	40
Wild Women Markets	7hr			10am	10am						I15	41

Theatre & Music

	Duration	Thurs 8	Fri 9	Sat 10	Sun 11	Mon 12	Tues 13	Wed 14	Thurs 15	Fri 16	Ref	Pg
2-Dimensional Life of Her	40min		5, 7 & 8pm	2, 4 & 7pm	5, 7 & 8pm						M10	10
Black & White Forever - final night party	5hr									8pm	K8	15
Die Lustige Kapella - The Fun Band	30min		6 & 7pm								O19	17
Glow - Taltaiyai	30min								7.15pm		Q5	12
Helix the Band	3hr				2pm						G15	17
Hope & Harmony Choir	40min			11.20am							I13	16
Eric Marshall Quintet - Jazz at the Newmarket	3hr				1pm						N16	17
Rock the Dock	3hr		7pm	7pm							H17	17
Rockin' the Boat	2hr								8pm		K8	13
Saskia Falls	45min	6.30 & 8pm	6.30 & 8pm	6.30 & 8pm	5 & 6.30pm			6.30 & 8pm	12.30, 2 & 6.30pm	12.30, 2 & 6.30pm	K8	10
Ships & Sailors & Songs of the Sea	1.5hr			6pm							I16	16
Sounds of the Sea	2hr									8pm	O17	16
The Black & White Club		9.30pm		9.30pm	9.30pm			9.30pm	8pm	8pm	K8	14
The Last Farewell	30min				11.30am, 12.30 & 1.30pm						I15	16
The Tiny Top	15min for 5hr		11am	11am, 5pm	11am						H12	11
Wakaid Girl - Lyndhurst Kid	1hr					8pm	1 & 8pm				K8	12

Especially for Kids

	Duration	Thurs 8	Fri 9	Sat 10	Sun 11	Mon 12	Tues 13	Wed 14	Thurs 15	Fri 16	Ref	Pg
A Book Safari - Splash Theatre Company	50min		2pm								P12	39
Animals Anonymous	5hr		11am								I13	39
Beautiful Birds - Night Time Story Time	1hr								6.30pm		P12	38
Encounters with Port Characters			11am, 1 & 3pm								I13	39
Fire + Flight - Workshops	1.5hr		11am & 3.30pm	11am & 3.30pm	11am						J13	37
Fire + Flight - final night parade	1hr									7pm	H12	37
Kids Art Workshops at the Seetainer	varies		12pm	12pm	12pm						I13	36
Ferry Rides				12pm	12pm						G13	34
GIANT Board Games	5hr			11am	11am						L1	34
Puppets Galore - Workshops	2hr		9.30am & 12.30pm		9.30am & 12.30pm						K14	36
Rock Pool! A dance party for kids	1hr		11am & 2pm								I16	35
SWANSONG	varies		11am	11am	11am						I13	34
Turn the Tide Puppet Show	1hr	10am	10am								H16	38

Festival Calendar

Major Weekend Events

	Duration	Thurs 8	Fri 9	Sat 10	Sun 11	Mon 12	Tues 13	Wed 14	Thurs 15	Fri 16	Ref	Pg
Bryan Dawe	varies		5pm	4pm	5pm & 9.30pm							8
Flinders Ports Sunday on the river	5hr				11am						I13	6
Luminosity - Light up the Port	4hr			5pm							I13	5
Fish Opera - Luminosity	15min			8, 8.30, 9pm							I13	5
Pururutendi - Opening Performance	1.5hr	7pm									N1	4
Roving performers	varies		11am	11am	11am						I13	8
Umbrella Fest	5hr		11am	11am							I13	9

Visual Arts & Installation

	Duration	Thurs 8	Fri 9	Sat 10	Sun 11	Mon 12	Tues 13	Wed 14	Thurs 15	Fri 16	Ref	Pg
All at Sea	varies	7.30am	7.30am	8am	8am	7.30am	7.30am	7.30am	7.30am	7.30am	J17	33
Allure	8hr	9am	9am			9am	9am	9am	9am	9am	H13	28
Back Streets, Main Roads	6hr	11am	11am	11am	11am	11am	11am	11am	11am	11am	J13	29
Birds of a Feather	5.5hr	7.30pm	7.30pm	7.30pm	7.30pm	7.30pm	7.30pm	7.30pm	7.30pm	7.30pm	I13 K8	25
Bonsai Blossoms	3hr	7.30pm	7.30pm	7.30pm	7.30pm	7.30pm	7.30pm	7.30pm	7.30pm	7.30pm	J14	26
Councillor Carol Martin Millinery Competition & Exhibition	6.5hr	10am	10am	10am	10am	10am	10am	10am	10am	10am	J17	30
Dark & Dirty				10am	10am	11am	11am	11am	11am	11am	I17	30
Dolphin Told Me	5hr	10am	10am			10am	10am	10am	10am		I12	33
Dolphins in the Port	6hr		10am	10am	10am						I13	22
Flock - installation	24hr										L13	26
Glimpses of Port Adelaide Reality	3hr		12pm		12pm	12pm	12pm	12pm	12pm	12pm	L12	33
It's a Beautiful Day	6hr	11am	11am	11am	11am	11am	11am	11am	11am	11am	G16	30
Jenkins Street Boatyards - intracacies and memories	8hr	9am	9am	9am	9am	9am	9am	9am	9am	9am	J15	27
Long Distance - Port Adelaide Visitor Information Centre	8hr	9am	9am	9am	9am	9am	9am	9am	9am	9am	K14	24
Long Distance - Lighthouse	4hr	10am	10am	10am	10am	10am	10am	10am	10am	10am	H12	24
Long Distance - Railway Hotel	12hr	10am	10am	10am	10am	10am	10am	10am	10am	10am	J16	24
Long Distance - Port Mall	9hr	8am	8am	8am		8am	8am	8am	8am	8am	L13	24
Maintaining Culture through Art	6hr	9am	9am			9am	9am	9am	9am	9am	X24	28
mostly STEAM	12hr	10am	10am	10am	10am	10am	10am	10am	10am	10am	J16	31
New Spudland - installation	24hr										H12	26
Ngura Wiru Winkiku Arts	5hr	10am	10am	10am	11am	10am	10am	10am	10am	10am	O16	28
Parallels of Parallels	6hr	11am	11am	11am	11am	11am	11am	11am	11am	11am	K14	31
Pixels and Propane	8hr	9am	9am			9am	9am	9am	9am	9am	H13	31
Port Misery?	4hr	12pm	12pm	12pm	12pm	12pm	12pm	12pm	12pm	12pm	K9	29
Port Outdoor Maritime Art Display	6hr	10am	10am	10am	10am	10am	10am	10am	10am	10am	J14	33
Port Portraits	7hr	10am	10am	10am	10am	10am	10am	10am	10am	10am	M18	21
Promise	24hr		7.30pm lights	7.30pm lights	7.30pm lights						I13	24
Quest for the South Magnetic Pole	7hr	10am	10am	10am	10am	10am	10am	10am	10am	10am	I16	29
Rust	5hr		Opening 5pm	11am	11am	11am	11am	11am	11am	11am	K14	27
Silken Waves	varies		10am	10am	10am						H13	25
Spring to Life	7hr	10am	10am	10am	10am	10am	10am	10am	10am	10am		33
The Weaving River	4hr		11am	11am	11am	11am	11am	11am	11am		K14	25
Transient Species	8hr	9am	9am	10am	10am	9am	9am	9am	9am	9am	M16	32

Artists in Residence

	Duration	Thurs 8	Fri 9	Sat 10	Sun 11	Mon 12	Tues 13	Wed 14	Thurs 15	Fri 16	Ref	Pg
Car-Cophony	30min			3.30pm	3.30pm						F17	18
Harts Mill Inhabited	20min for 2.5hr							8pm	8pm	8pm	K4	19

Festival Guide

Major Weekend Events

Event	Venue	Ref	Pg
Purrutendi	Lartelare	N1	4
Luminosity	Lighthouse Hub	I13	5
Flinders Ports Sunday on the River	Lighthouse Hub	I13	6
Roving Performers	Lighthouse Hub	I13	8
Umbrella Fest	Lighthouse Hub	I13	9

Visual Arts & Installation

Event	Venue	Ref	Pg
Port Portraits	National Railway Museum	M18	21
Dolphins in the Port	Lighthouse Hub	I13	22
Promise	Lighthouse Hub	I13	24
Long Distance	Visitor Information Centre Lighthouse Queens Wharf Railway Hotel Port Mall	K14 H12 J16 L13	24
Birds of a Feather	Port Partnership Waterside Workers Hall	I13 K8	25
The Weaving River	Visitor Information Centre	K14	25
Silken Waves	Lighthouse Hub	H13	25
Flock	Port Mall	L13	26
New Spudland	Lighthouse Hub	H12	26
Bonsai Blossoms	In-fringed Design	J14	26
Rust	Black Diamond Gallery	K14	27
Jenkins St Boatyards - intricacies and memories	Lipson Café	J15	27
Allure	New Land Gallery	H13	28
Maintaining Culture through Art	Tauondi College	X24	28
Ngura Wiru Winkiku Arts	Better World Arts	O16	28
Back Streets, Main Roads	Jackalope Studio Gallery	J15	29
Quest for the South Magnetic Pole	SA Maritime Museum	I16	29
Port Misery?	Showroom	K9	29
It's a Beautiful Day	Gaff Gallery	G16	30
Councillor Carol Martin Millinery Competition & Exhibition	St Vincent de Paul's	J17	30
Dark & Dirty	PD Gallery	H17	30
Parallels of Parallels	Visitor Information Centre	K14	31
'mostly' Steam	Railway Hotel	J16	31
Pixels and Propane	New Land Gallery	H13	31
Transcient Species	Adelaide Cellar Door	M16	32
Glimpses of Port Adelaide Reality	The Cottage Kitchen	L12	33
All at Sea	Café Foreyou	J17	33
Dolphin told me	Whale & Dolphin Conservation Society	I12	33
Spring to Life	Edgewater Gallery		33
Port Outdoor Maritime Art Display	Port Admiral Hotel	J14	33

Artists in Residence

Event	Venue	Ref	Pg
Car-Cophony	Dock One	F17	18
Harts Mill Inhabited	Harts Mill	K4	19

Theatre & Music

Event	Venue	Ref	Pg
2-Dimensional Life of Her	St Paul's Church Hall	M10	10
Saskia Falls	Waterside Workers Hall	K8	10
The Tiny Top	Lighthouse Hub	H12	11
Glow - Taltaiyai	Walter Morris Drive Reserve	Q5	12
Wakaid Girl - Lyndhurst Kid	Waterside Workers Hall	K8	12
Rockin' the Boat	Waterside Workers Hall	K8	13
Black & White Club	Waterside Workers Hall	K8	14
Black & White Forever	Waterside Workers Hall	K8	15
Ships & Sailors & Songs of the Sea	SA Maritime Museum	I16	16
The Last Farewell	The Sail Makers Loft	I15	16
Hope & Harmony Choir	Lighthouse Hub	I13	16
Sounds of the Sea	Port Adelaide Uniting Church	O17	16
Die Lustige Kapella - The Fun Band	SA Aviation Museum	O19	17
Rock the Dock	Port Dock Brewery Hotel	H17	17
Helix the Band	Dockside Tavern	G15	17
Eric Marshall Quintet - Jazz at the Newmarket	Newmarket Hotel	N16	17

Eclectic Port Events

Event	Venue	Ref	Pg
Hip, Hip Hooray, it's our 25th Birthday	Waterside Workers Hall	K8	40
Second to None - An Aboriginal & Maritime Journey	Waterside Workers Hall	K8	40
Wild Women Markets	Jackalope Studio Gallery	J15	41
Op Shop Hop	Visitor Information Centre	K14	41
Adventures on the High Tea	Waterside Workers Hall	K8	41
Beer Appreciation at the Port Dock	Port Dock Brewery Hotel	H17	41
One & All Open Ship	McLarens Wharf	F14	42
Friendly Street Poets	Port Adelaide Library	P12	42
Aviation Engine Run	SA Aviation Museum	O19	42
Aviation Museum Twilight Opening	SA Aviation Museum	O19	42
Cool Jazz & Art: Where Art meets Business	Todd St Business Chambers	I17	43
Arresting Tales	Visitor Information Centre	K14	43
Port Vintage Walks	Visitor Information Centre	K14	43
Port Festival on Foot	Visitor Information Centre	K14	43
Festival Forum - Harts Mill Inhabited Again	First Commercial Hotel	I14	44
Festival Forum - Don't know whether to laugh or cry...	First Commercial Hotel	I14	44
Festival Forum - Natural Treasures of the Port	First Commercial Hotel	I14	44
Festival Forum - The art - and technology of story telling	Waterside Workers Hall	K8	44

Especially for Kids

Event	Venue	Ref	Pg
Planet Teal Zone	Lighthouse Hub	I13	38
Rock Pool! A dance party for kids	SA Maritime Museum	I16	35
Swansong	Lighthouse Hub	I13	34
GIANT Board Games	Waterfront New Port	L1	34
Fire + Flight - Workshops	Port Adelaide Town Hall	J13	37
Fire + Flight - Parade	Lighthouse to Harts Mill	H12	37
Puppets Galore - Workshops	Port Community Arts Centre	K14	36
Kids Art Workshops at the Seetainer	Lighthouse Hub	I13	36
Encounters with Port Characters	Lighthouse Hub	I13	39
A Book Safari	Port Adelaide Library	P12	39
Beautiful Birds - Night Time Story Time	Port Adelaide Library	P12	38
Turn the Tide Puppet Show	The Seahorse Farm	H16	39
Animals Anonymous	Lighthouse Hub	I13	39



How to get to Port Adelaide

By Bus Adelaide to Port Adelaide Direct route from North Tce, opposite the Adelaide Railway Station: Bus 150 to Osborne - alight in Port Adelaide at bus stop A - Map Ref L14

By Train From Adelaide: Outer Harbor Line to Port Adelaide - Map Ref S18

By Car From Adelaide via Port Rd (Route A7). From Glenelg via Tapleys Hill Rd (Route A15) or Military Rd. From northern suburbs via Port River Expressway (Route A9)

Parking (time restrictions may apply)

There is ample parking close to the Port Festival action, so finding a park shouldn't be a problem.

Port Mall Parking Map Ref M13

Dock 1 (near Jubilee St) Map Ref G18

Behind Police Station (Lipson St South) Map Ref K18

Port Canal Shopping Centre Map Ref R12 & Q15

TAFE College (Nile St) Map Ref K7

Council Car Park (Robe St) Map Ref J11 & J12

Fishermen's Wharf Market (Robe St) Map Ref I10 *Fees apply

CELTICA FESTIVAL

4-6 December 2009

A celebration of the Celtic cultures
of Europe and the British Isles

Music
Dance
Art & Craft
Storytelling
Language
Literature

Free event

www.celticafestival.com.au



SEMAPHORE MUSIC FESTIVAL

Adelaide's
Original Alt.
Country Roots &
Blues Festival

**Labour Day
Long Weekend**

**Fri 2 - Mon 5
Oct 2009**

Free Concerts on
Foreshore Reserve
and in Select Pubs
and Venues

www.semaphoremusicfestival.com



Semaphore Street Fair

Sun 29 Nov • 11am-5pm



Live music
Xmas markets
Entertainment marquees
Children's fun activities
Food alfresco
Bike races
Lots more...

semaphore
discover something different

www.semaphoresa.com

Artists Market

5 & 6 December 2009

FREE event 11am to 6pm
Waterfront near Harts Mill
Mundy Street Port Adelaide

www.artatthehart.com.au

The Port.
It's happening

semaphore community markets

St Bede's 200 Military Rd

1st Sunday of the month 10am - 3pm

www.semaphorecommunitymarkets.com.au

Port & Coast attractions



VISITOR INFORMATION CENTRE
PORT ADELAIDE

- SA Maritime Museum
- National Railway Museum
- SA Aviation Museum
- The Seahorse Farm
- Fishermen's Wharf Markets
- Dolphin River Cruises
- Port & Semaphore Walks
- State Heritage Area
- Port Heritage Pub Trail
- Semaphore Road
- Semaphore Foreshore
- Coastal Tourist Drive
- Coastal Bike/Walk Path
- Port Bikes
- Kayaking
- and so much more...*



Port Adelaide Visitor Information Centre

66 Commercial Road, Port Adelaide • Tel (08) 8405 6560 • visitorinfo@porten.sa.gov.au • www.portenf.sa.gov.au/goto/tourism



IF YOU'RE PLANNING
A BRILLIANT HOLIDAY
THERE'S ONE PLACE
YOU MUST VISIT.

southaustralia.com



South Australia.
A brilliant blend.

Sponsors

Thank you to all our generous sponsors...

Presenting Partners



Government of
South Australia

lmc



The Port.
It's happening



Gold Sponsor



Flinders Ports
SOUTH AUSTRALIA

Media Partner



Industry Sponsors



Official Suppliers



Climate Friendly Event



The City of Port Adelaide Enfield is taking action on climate change by making the 2009 Port Festival a Climate Friendly Event™. We are working with Climate Friendly to measure and offset greenhouse gas emissions associated with the festival's carbon footprint.



Printed on ENVI 50/50 uncoated, recycled paper manufactured in Australia by Australian Paper and is certified Greenhouse Friendly™ by the Australian Government under the Department of Climate Change Greenhouse Friendly™ Initiative. ENVI 50/50 uncoated, recycled is Carbon Neutral.



VISITOR INFORMATION CENTRE
PORT ADELAIDE



CITY OF
Port Adelaide Enfield

Port Adelaide Visitor Information Centre

66 Commercial Rd, Port Adelaide

Tel 08 8405 6560

Fax 08 8447 4112

Freecall 1800 629 888 (country callers)

Email portfestival@portenf.sa.gov.au

Website www.portfestival.com.au

Open 7 days a week from 9am-5pm
(closed Christmas Day)

culture
arts
music
fun



Gulf St Vincent

Largs Bay

Semaphore

Port
Adelaide

Port River Expressway

Grand Junction Road

South Road

Tapleys Hill Road

Port Road

Adelaide

Adelaide
Airport

Glenelg



the Port
Festival



Please recycle through your Council's recycling service once you have finished using it. The City of Port Adelaide Enfield, including its Elected Members and Council staff, is not responsible for the services, act or omissions of any performer, promoter or other third party in connection with the Port Festival. As such, the views and opinions expressed by third parties associated with the Port Festival do not represent the views or opinions of the Council. Information in this program is correct at the time of printing and provided in good faith. No responsibility is taken for any events listed, inaccuracies, changes, errors, omissions or any misconceptions.

© City of Port Adelaide Enfield August 2009